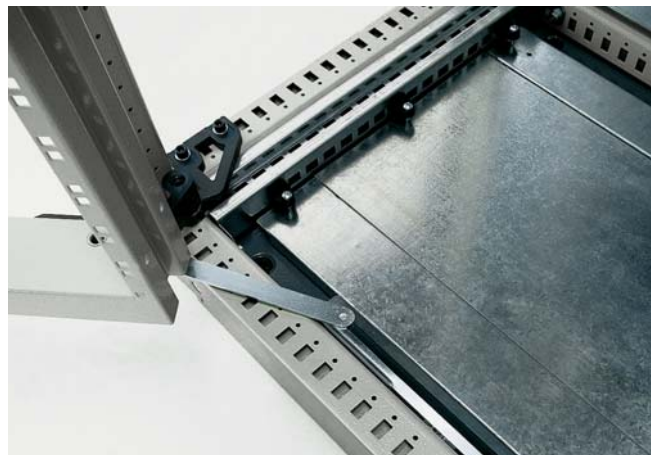
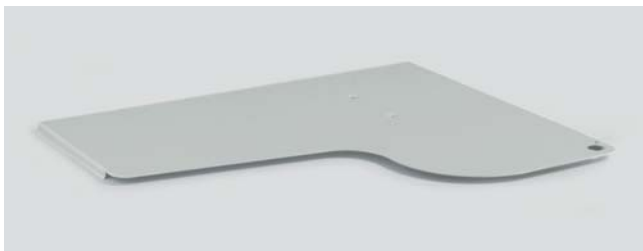
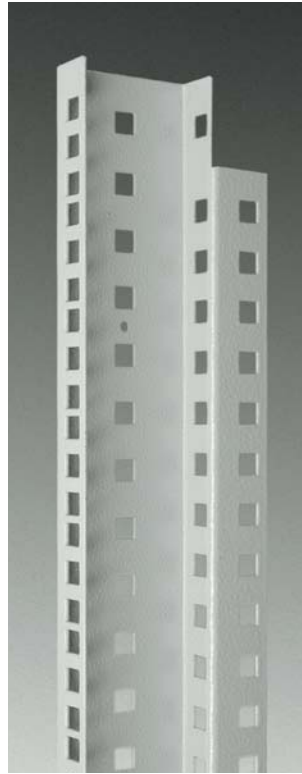
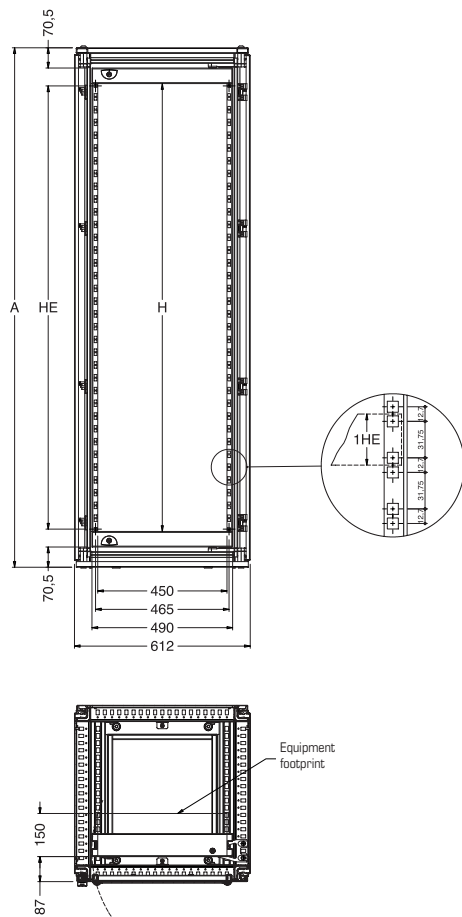


19" RACK SOLUTIONS



In some applications, the 19" components by ETA are essential companions for enclosures.

- full or partial height rack frames with 90-degree or 180-degree opening
- rack uprights or system plus
- rack frames
- fixed or removable shelves
- solid or perforated 19" rack panels.



600 SWINGING FRAME ATTR

CHARACTERISTICS

Frame manufactured from press bent rails in 15/10 sheet steel and 20/10 box-shaped horizontal profiles that give high strength.

PAINT FINISH

ETA standard epoxy polyester powder coating.
Colour: RAL 7035 textured finish.

DELIVERY

- rack frame
- two double bar locking systems \varnothing 3mm
- 90° rotating hinges complete with accessories
- closing latches.

SWINGING FRAME W=600

ATTR CODE	DIMENSIONS		
	A	H	HE
ATTR035060	1809	1559	35
ATTR040060	2009	1782	40
ATTR044060	2209	1959	44

Only rotation 90°.

800 SWINGING FRAME ATTR

CHARACTERISTICS

Frame and box-shaped horizontal profiles manufactured from 20/10 sheet steel which offer high strength.

PAINT FINISH

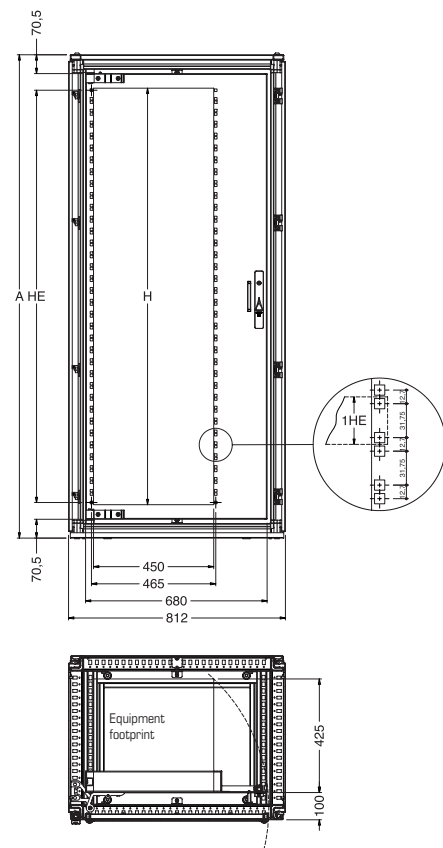
ETA standard epoxy polyester powder coating.
Frame and panel: colour RAL 7035 textured finish.

DELIVERY

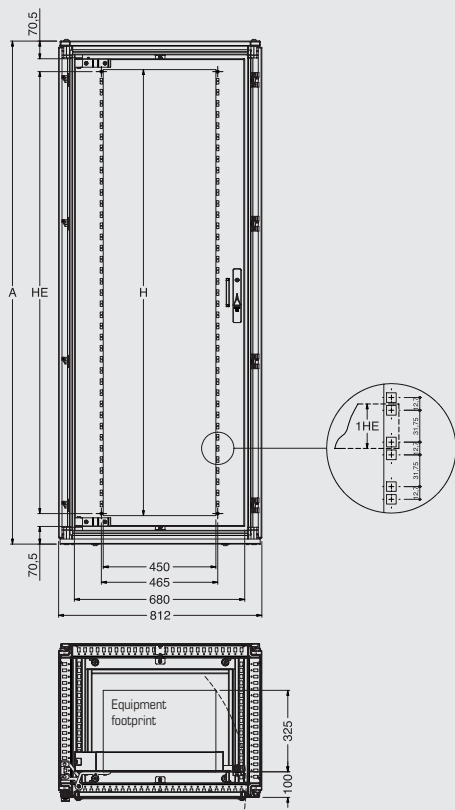
- rack frame
- 180° rotating hinges complete with accessories
- closing latches.

SWINGING FRAME W=800

ATTR CODE	DIMENSIONS		
	A	H	HE
ATTR035080	1809	1559	35
ATTR040080	2009	1782	40
ATTR044080	2209	1959	44



Only rotation 180°.



CENTRAL SWINGING FRAME ATTR ... C

CHARACTERISTICS

Frame and box-shaped horizontal profiles manufactured from 20/10 sheet steel which offer high strength.

PAINT FINISH

ETA standard epoxy polyester powder coating.
Colour: RAL 7035 textured finish.

DELIVERY

- rack frame with \varnothing 3mm double bar locking system
- 180° rotating hinges complete with accessories
- closing latches.

CENTRAL SWINGING FRAME W=800

ATTR CODE	DIMENSIONS		
	A	H	HE
ATTR035080C	1809	1559	35
ATTR040080C	2009	1782	40
ATTR044080C	2209	1959	44

Only rotation 180°.

PARTIAL HEIGHT SWINGING FRAME

CHARACTERISTICS

Frame and box-shaped horizontal profiles manufactured from 20/10 sheet steel which offer high strength.

PAINT FINISH

ETA standard epoxy polyester powder coating.
Colour: RAL 7035 textured finish.

DELIVERY

- rack frame
- two double bar locking systems \varnothing 3mm
- 180° rotating hinges with fixing accessories.
- closing latches

PARTIAL HEIGHT SWINGING FRAME W=800

ATTR CODE	DIMENSIONS		
	A	H	HE
ATTR009080	493	407	9
ATTR012080	643	534	12
ATTR015080	768	682	15

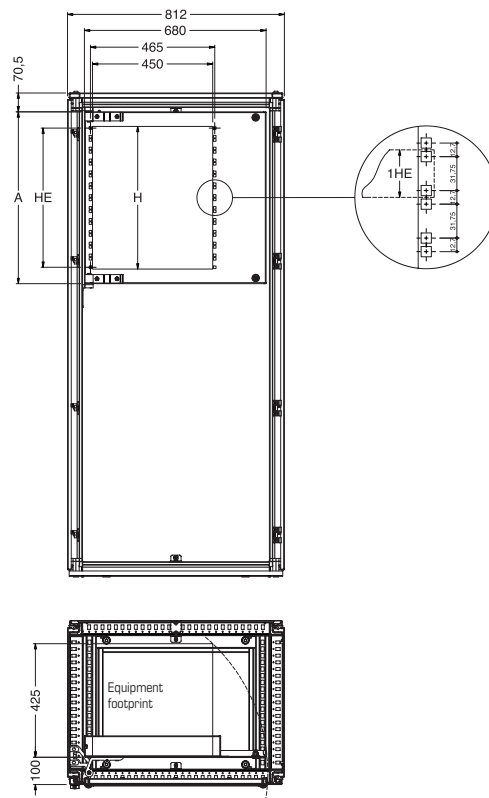
To be ordered separately the fixing rails.

FIXING RAIL FOR THE PARTIAL HEIGHT RACK FRAME

WTRR CODE	DEPTH
WTRR-000500	500
WTRR-000600	600
WTRR-000800	800
WTRR-001000	1000

DELIVERY

Supply includes nr. 1 piece complete with mounting accessories.



Only rotation 180°.

FRAME STOP WTFR-001

Easy to mount, it stops the rack frame at 150° avoiding its accidental closing.

DELIVERY

Supply includes nr. 1 piece with mounting accessories.



FIXED FRAME ATCR

CHARACTERISTICS

Manufactured from 20/10 sheet steel.
To be used to mount rack equipment.

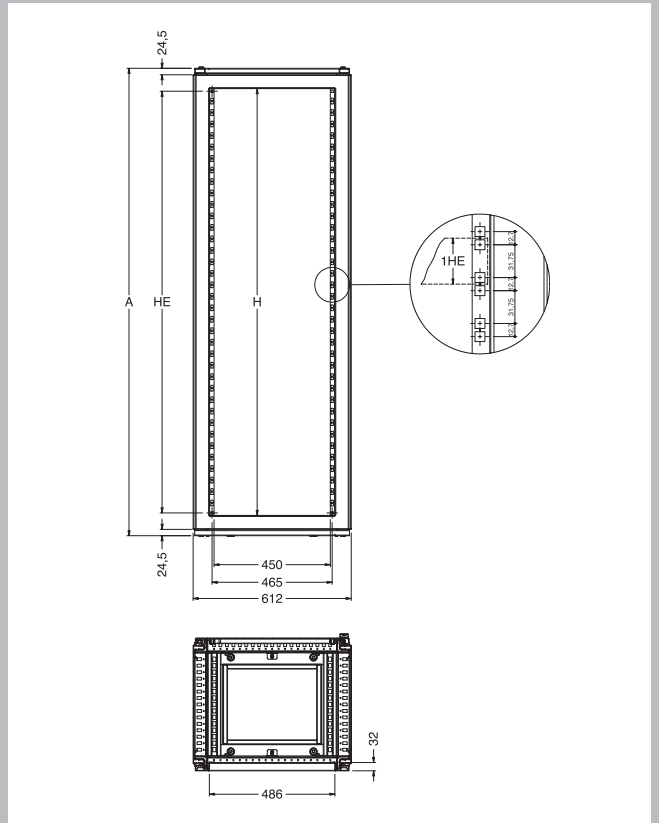
PAINT FINISH

ETA standard epoxy polyester powder coating.
Colour: RAL 7035 textured finish.

DELIVERY

Supply includes nr. 1 piece complete with cabinet uprights and mounting accessories.

FIXED FRAME			
ATCR CODE	DIMENSIONS		
	A	H	HE
ATCR028060	1409	1252	28
ATCR032060	1609	1429	32
ATCR037060	1809	1652	37
ATCR041060	2009	1829	41
ATCR046060	2209	2052	46



"L" RAILS ATRL

CHARACTERISTICS

Manufactured from 20/10 press bent sheet steel.

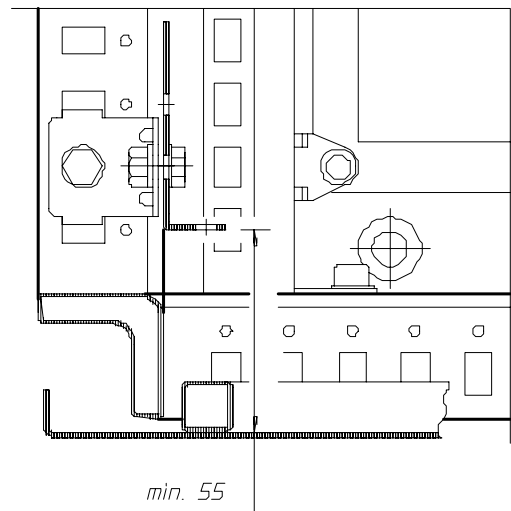
PAINT FINISH

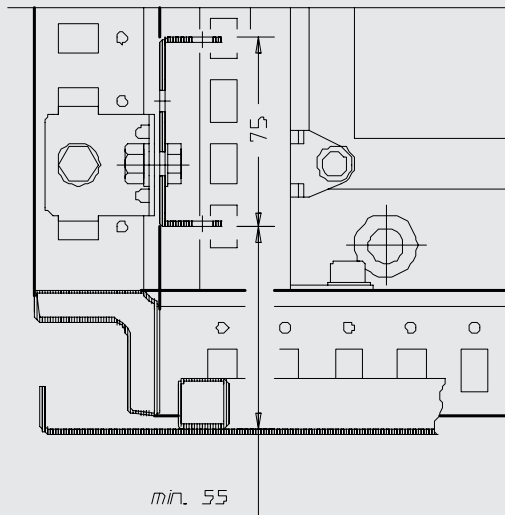
ETA standard epoxy polyester powder coating.
Colour: RAL 7035 textured finish.

DELIVERY

Supply includes nr. 2 rails complete with mounting screws.

"L" RAILS ATRL		
ATRL CODE	CABINET HEIGHT	HE
ATRL033060	1600	33
ATRL038060	1800	38
ATRL042060	2000	42
ATRL047060	2200	47





“U” RAILS ATRU

CHARACTERISTICS

Manufactured from 20/10 press bent sheet steel.

PAINT FINISH

ETA standard epoxy polyester powder coating.
Colour: RAL 7035 textured finish.

DELIVERY

Supply includes nr. 2 pieces complete with mounting screws.

“U” RAILS ATRU		
ATRU CODE	CABINET HEIGHT	HE
ATRU033060	1600	33
ATRU038060	1800	38
ATRU042060	2000	42
ATRU047060	2200	47

“SYSTEM PLUS” 19” RAILS - WTMK

Universal solution with front and side punchings designed for assembling 19” items or modular equipments on DIN rails.

CHARACTERISTICS

Manufactured from 15/10 press bent sheet steel.

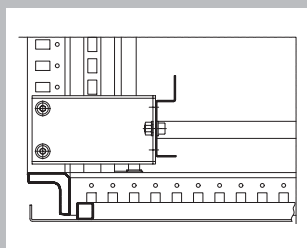
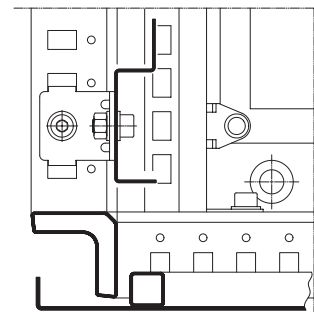
PAINT FINISH

ETA standard epoxy polyester powder coating.
Colour: RAL 7035 textured finish.

DELIVERY

Supply includes nr. 2 pieces complete with mounting accessories.

SYSTEM PLUS 19” RAILS		
WTMK CODE	CABINET HEIGHT	HE
WTMK331600	1600	33
WTMK381800	1800	38
WTMK422000	2000	42
WTMK472200	2200	47



FIXING BRACKETS WTKK000800

Special kit for fixation of WTMK 19” rails on cabinets 800mm wide.

CHARACTERISTICS

Manufactured from 30/10 press bent sheet steel.

PAINT FINISH

ETA standard epoxy polyester powder coating.
Colour: RAL 7035 textured finish.

DELIVERY

Supply includes nr. 4 pieces complete with mounting accessories.



FIXED OR SLIDING SHELF

WTRI CODE	SHELF DEPTH	CABINET DEPTH
WTRI000365	365	500
WTRI000465	465	600
WTRI000565	565	800
WTRI000665	665	800
WTRI000765	765	1000

FIXED OR SLIDING SHELF WTRI FOR 19" APPLICATIONS

Shelf with ventilation openings manufactured from 15/10 sheet steel.
Fixed shelf: load carrying capacity 70 Kg.
Sliding shelf: load carrying capacity 40 Kg.

PAINT FINISH

ETA standard epoxy polyester powder coating.
Colour: RAL 7035 textured finish.

DELIVERY

Supply includes nr. 1 piece.

To be ordered separately: sliding guides or, if the shelf is fixed, kit ELRP-001 (package of accessories for fixed installation).

SLIDING GUIDES FOR SHELF WTGE

Guides for the fixation of the shelf. Load carrying capacity 40 kg.

DELIVERY

Supply includes nr. 2 pieces with fixing and mounting accessories.

SLIDING GUIDES FOR SHELF

WTGE CODE	SHELF DEPTH	CABINET DEPTH
WTGE-000365	365	500
WTGE-000465	465	600
WTGE-000565	565	800
WTGE-000665	665	800
WTGE-000765	765	1000



NEW

EXTRACTABLE SHELF AND MOUSE PAD WTRI000500SM

Rotary support to be fixed on an extractable shelf, allowing to attach and extract any keyboard inside the 19" structure, with mouse area.

CHARACTERISTICS

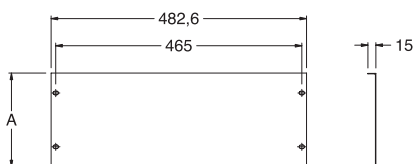
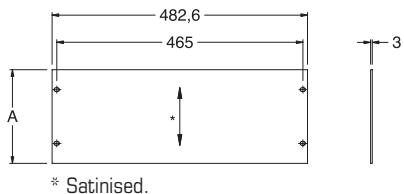
Made of 15/10 thicked pressbent sheet steel.

PAINT FINISH

ETA standard epoxy polyester powder coating.
Colour: RAL 7035 textured finish.

DELIVERY

Supply includes nr. 1 piece complete with mounting accessories.



19" PANELS

Manufactured from 30/10 satinised aluminium.
On request, panels manufactured from 15/10 sheet steel painted in RAL 7035 textured finish.

DELIVERY

Supply includes nr. 1 piece.

To be ordered separately: WT106 and WA107.

ALUMINIUM RACK PANEL

WA CODE	HE
WA115	1
WA116	2
WA117	3
WA118	4
WA119	5
WA120	6
WA121	7
WA122	8
WA123	9
WA124	10
WA125	11
WA126	12

PAINTED RACK PANEL

WA CODE	HE
WA115LB	1
WA116LB	2
WA117LB	3
WA118LB	4
WA119LB	5
WA120LB	6
WA121LB	7
WA122LB	8
WA123LB	9
WA124LB	10
WA125LB	11
WA126LB	12

19" FRONT PANEL WITH OPENING WTPF030024

To assemble equipment fixed on DIN rails.
Front panel with modular slot that allows to lodge 24 modules 18mm in width and 3 units in height.

CHARACTERISTICS

Manufactured from 10/10 press bent sheet steel.

PAINT FINISH

ETA standard epoxy polyester powder coating.
Colour: RAL 7035 textured finish.

DELIVERY

Supply includes nr. 1 piece with mounting screws.





M6 CAGE NUT WT106

To be ordered separately.



M6 SCREW WITH RING WA107

To be ordered separately.

SUPPORT BRACKETS WA990B

Manufactured from 20/10 sheet steel.

PAINT FINISH

ETA standard epoxy polyester powder coating.
Colour: RAL 7035 textured finish.

DELIVERY

Supply includes nr. 2 pieces complete with mounting accessories.

