

# ARETA SUITE CABINET



removable roof and bottom  
to simplify glanding

the orthogonal joint made  
of zinc alloy steel allows a simple mounting  
of the structure with just 8 screws

front inserted mounting plate,  
which can be recessed flush with the uprights  
thanks to the effective sliding guide system  
(side inserted mounting plate also available  
as an option)

very sturdy structural uprights  
with closed symmetric profile

possibility to install 180-degree  
opening hinges

closing system with

- 3 points for H=1400-1600,
- 4 points for H=1800-2000,
- 5 points for H=2200,

with possibility to mount different inserts  
and handles

door with strengthening frame

innovative cable-entry floor  
using modular cable conduit plates  
(double cable entry for enclosures  
larger than 1200)

components  
specifically  
designed and  
manufactured  
from galvanized  
zamac

easy-to-  
assemble  
modular plinth  
ATZE

removable  
guides for  
mounting plate  
insertion



from left:  
- details of coupling and roof  
- detail of the strengthening  
rubber profile for door closing  
- roof and plexi door detail

ASSEMBLED CABINET



DIMENSIONS W X H X D	CABINET WITH FRONT BLANK DOOR AND REAR PANEL (1)	CABINET WITH FRONT GLAZED DOOR AND REAR PANEL (2)	CABINET WITH FRONT AND REAR BLANK DOOR (3)	MODULAR CABINET WITH INNER/MULTIPLE DOORS	CABINET FRAME FOR MODULAR SYSTEMS	GLAZED DOOR (WITHOUT STRUCTURAL UPRIGHTS)
200 X 1800 X 500						
200 X 2000 X 600						
300 X 1600 X 400						
300 X 1600 X 500						
300 X 1600 X 600						
300 X 1800 X 400						
300 X 1800 X 500						
300 X 1800 X 600						
300 X 1800 X 800						
300 X 2000 X 400						
300 X 2000 X 500						
300 X 2000 X 600						
300 X 2000 X 800						
300 X 2200 X 500						
300 X 2200 X 600						
300 X 2200 X 800						
400 X 1600 X 400	ARETA041604PR		ARETA041604DP			
400 X 1600 X 500	ARETA041605PR		ARETA041605DP			
400 X 1600 X 600	ARETA041606PR		ARETA041606DP			
400 X 1800 X 400	ARETA041804PR		ARETA041804DP			
400 X 1800 X 500	ARETA041805PR		ARETA041805DP			
400 X 1800 X 600	ARETA041806PR		ARETA041806DP			
400 X 1800 X 800	ARETA041808PR		ARETA041808DP			
400 X 2000 X 400	ARETA042004PR		ARETA042004DP			
400 X 2000 X 500	ARETA042005PR		ARETA042005DP			
400 X 2000 X 600	ARETA042006PR		ARETA042006DP			
400 X 2000 X 800	ARETA042008PR		ARETA042008DP			
400 X 2200 X 500	ARETA042205PR		ARETA042205DP			
400 X 2200 X 600	ARETA042206PR		ARETA042206DP			
400 X 2200 X 800	ARETA042208PR		ARETA042208DP			
600 X 1400 X 400	ARETA061404PR	ARETA061404PX	ARETA061404DP			
600 X 1400 X 500	ARETA061405PR	ARETA061405PX	ARETA061405DP			
600 X 1600 X 400	ARETA061604PR	ARETA061604PX	ARETA061604DP			
600 X 1600 X 500	ARETA061605PR	ARETA061605PX	ARETA061605DP			
600 X 1600 X 600	ARETA061606PR	ARETA061606PX	ARETA061606DP			
600 X 1800 X 400	ARETA061804PR	ARETA061804PX	ARETA061804DP	ARETA061804ST	ATSM060180	ATPX060180S
600 X 1800 X 500	ARETA061805PR	ARETA061805PX	ARETA061805DP	ARETA061805ST	ATSM060180	ATPX060180S
600 X 1800 X 600	ARETA061806PR	ARETA061806PX	ARETA061806DP	ARETA061806ST	ATSM060180	ATPX060180S

- (1) supply includes the cabinet frame, blank door and rear panel.  
To be ordered separately mounting plate, side panels, plinth and eyebolts WTGS-001
- (2) supply includes the cabinet frame, glazed door and rear panel.  
To be ordered separately mounting plate, side panels, plinth and eyebolts WTGS-001
- (3) supply includes the cabinet frame, front door and rear door.  
To be ordered separately mounting plate, side panels, plinth and eyebolts WTGS-001

ASSEMBLED CABINET



DIMENSIONS W X H X D	CABINET WITH FRONT BLANK DOOR AND REAR PANEL (1)	CABINET WITH FRONT GLAZED DOOR AND REAR PANEL (2)	CABINET WITH FRONT AND REAR BLANK DOOR (3)	MODULAR CABINET WITH INNER/MULTIPLE DOORS	CABINET FRAME FOR MODULAR SYSTEMS	GLAZED DOOR (WITHOUT STRUCTURAL UPRIGHTS)
600 X 1800 X 800	ARETA061808PR	ARETA061808PX	ARETA061808DP	ARETA061808ST	ATSM060180	ATPX060180S
600 X 2000 X 400	ARETA062004PR	ARETA062004PX	ARETA062004DP	ARETA062004ST	ATSM060200	ATPX060200S
600 X 2000 X 500	ARETA062005PR	ARETA062005PX	ARETA062005DP	ARETA062005ST	ATSM060200	ATPX060200S
600 X 2000 X 600	ARETA062006PR	ARETA062006PX	ARETA062006DP	ARETA062006ST	ATSM060200	ATPX060200S
600 X 2000 X 800	ARETA062008PR	ARETA062008PX	ARETA062008DP	ARETA062008ST	ATSM060200	ATPX060200S
600 X 2000 X 1000	ARETA062010PR					
600 X 2200 X 500	ARETA062205PR	ARETA062205PX	ARETA062205DP			
600 X 2200 X 600	ARETA062206PR	ARETA062206PX	ARETA062206DP			
600 X 2200 X 800	ARETA062208PR	ARETA062208PX	ARETA062208DP			
800 X 1400 X 400	ARETA081404PR	ARETA081404PX	ARETA081404DP			
800 X 1400 X 500	ARETA081405PR	ARETA081405PX	ARETA081405DP			
800 X 1600 X 400	ARETA081604PR	ARETA081604PX	ARETA081604DP			
800 X 1600 X 500	ARETA081605PR	ARETA081605PX	ARETA081605DP			
800 X 1600 X 600	ARETA081606PR	ARETA081606PX	ARETA081606DP			
800 X 1800 X 400	ARETA081804PR	ARETA081804PX	ARETA081804DP	ARETA081804ST	ATSM080180	ATPX080180S
800 X 1800 X 500	ARETA081805PR	ARETA081805PX	ARETA081805DP	ARETA081805ST	ATSM080180	ATPX080180S
800 X 1800 X 600	ARETA081806PR	ARETA081806PX	ARETA081806DP	ARETA081806ST	ATSM080180	ATPX080180S
800 X 1800 X 800	ARETA081808PR	ARETA081808PX	ARETA081808DP	ARETA081808ST	ATSM080180	ATPX080180S
800 X 2000 X 400	ARETA082004PR	ARETA082004PX	ARETA082004DP	ARETA082004ST	ATSM080200	ATPX080200S
800 X 2000 X 500	ARETA082005PR	ARETA082005PX	ARETA082005DP	ARETA082005ST	ATSM080200	ATPX080200S
800 X 2000 X 600	ARETA082006PR	ARETA082006PX	ARETA082006DP	ARETA082006ST	ATSM080200	ATPX080200S
800 X 2000 X 800	ARETA082008PR	ARETA082008PX	ARETA082008DP	ARETA082008ST	ATSM080200	ATPX080200S
800 X 2000 X 1000	ARETA082010PR					
800 X 2200 X 500	ARETA082205PR	ARETA082205PX	ARETA082205DP			
800 X 2200 X 600	ARETA082206PR	ARETA082206PX	ARETA082206DP			
800 X 2200 X 800	ARETA082208PR	ARETA082208PX	ARETA082208DP			
1000 X 1600 X 400	ARETA101604PR	ARETA101604PX	ARETA101604DP			
1000 X 1600 X 500	ARETA101605PR	ARETA101605PX	ARETA101605DP			
1000 X 1600 X 600	ARETA101606PR	ARETA101606PX	ARETA101606DP			
1000 X 1800 X 400	ARETA101804PR	ARETA101804PX	ARETA101804DP			
1000 X 1800 X 500	ARETA101805PR	ARETA101805PX	ARETA101805DP			
1000 X 1800 X 600	ARETA101806PR	ARETA101806PX	ARETA101806DP			
1000 X 1800 X 800	ARETA101808PR	ARETA101808PX	ARETA101808DP			
1000 X 2000 X 400	ARETA102004PR	ARETA102004PX	ARETA102004DP			
1000 X 2000 X 500	ARETA102005PR	ARETA102005PX	ARETA102005DP			
1000 X 2000 X 600	ARETA102006PR	ARETA102006PX	ARETA102006DP			
1000 X 2000 X 800	ARETA102008PR	ARETA102008PX	ARETA102008DP			
1000 X 2200 X 500	ARETA102205PR	ARETA102205PX	ARETA102205DP			

- (1) supply includes the cabinet frame, blank door and rear panel.  
To be ordered separately mounting plate, side panels, plinth and eyebolts WTGS-001
- (2) supply includes the cabinet frame, glazed door and rear panel.  
To be ordered separately mounting plate, side panels, plinth and eyebolts WTGS-001
- (3) supply includes the cabinet frame, front door and rear door.  
To be ordered separately mounting plate, side panels, plinth and eyebolts WTGS-001

ASSEMBLED CABINET



DIMENSIONS W X H X D	CABINET WITH FRONT BLANK DOOR AND REAR PANEL (1)	CABINET WITH FRONT GLAZED DOOR AND REAR PANEL (2)	CABINET WITH FRONT AND REAR BLANK DOOR (3)	MODULAR CABINET WITH INNER/MULTIPLE DOORS	CABINET FRAME FOR MODULAR SYSTEMS	GLAZED DOOR (WITHOUT STRUCTURAL UPRIGHTS)
1000 X 2200 X 600	ARETA102206PR	ARETA102206PX	ARETA102206DP			
1000 X 2200 X 800	ARETA102208PR	ARETA102208PX	ARETA102208DP			
1200 X 1400 X 400	ARETA121404PR		ARETA121404DP			
1200 X 1400 X 500	ARETA121405PR		ARETA121405DP			
1200 X 1600 X 400	ARETA121604PR		ARETA121604DP			
1200 X 1600 X 500	ARETA121605PR		ARETA121605DP			
1200 X 1600 X 600	ARETA121606PR		ARETA121606DP			
1200 X 1800 X 400	ARETA121804PR		ARETA121804DP			
1200 X 1800 X 500	ARETA121805PR		ARETA121805DP			
1200 X 1800 X 600	ARETA121806PR		ARETA121806DP			
1200 X 1800 X 800	ARETA121808PR		ARETA121808DP			
1200 X 2000 X 400	ARETA122004PR		ARETA122004DP			
1200 X 2000 X 500	ARETA122005PR		ARETA122005DP			
1200 X 2000 X 600	ARETA122006PR		ARETA122006DP			
1200 X 2000 X 800	ARETA122008PR		ARETA122008DP			
1200 X 2000 X 1000	ARETA122010PR					
1200 X 2200 X 500	ARETA122205PR		ARETA122205DP			
1200 X 2200 X 600	ARETA122206PR		ARETA122206DP			
1200 X 2200 X 800	ARETA122208PR		ARETA122208DP			
1400 X 2000 X 400	ARETA142004PR		ARETA142004DP			
1400 X 2000 X 500	ARETA142005PR		ARETA142005DP			
1400 X 2000 X 600	ARETA142006PR		ARETA142006DP			
1400 X 2000 X 800	ARETA142008PR		ARETA142008DP			
1600 X 1400 X 400	ARETA161404PR		ARETA161404DP			
1600 X 1400 X 500	ARETA161405PR		ARETA161405DP			
1600 X 2000 X 400	ARETA162004PR		ARETA162004DP			
1600 X 2000 X 500	ARETA162005PR		ARETA162005DP			
1600 X 2000 X 600	ARETA162006PR		ARETA162006DP			
1600 X 2000 X 800	ARETA162008PR		ARETA162008DP			

- (1) supply includes the cabinet frame, blank door and rear panel.  
To be ordered separately mounting plate, side panels, plinth and eyebolts WTGS-001
- (2) supply includes the cabinet frame, glazed door and rear panel.  
To be ordered separately mounting plate, side panels, plinth and eyebolts WTGS-001
- (3) supply includes the cabinet frame, front door and rear door.  
To be ordered separately mounting plate, side panels, plinth and eyebolts WTGS-001

FLAT-PACK CABINET



DIMENSIONS  
W X H X D

ROOF AND BOTTOM

BLANK DOOR  
WITH FRONT UPRIGHTS

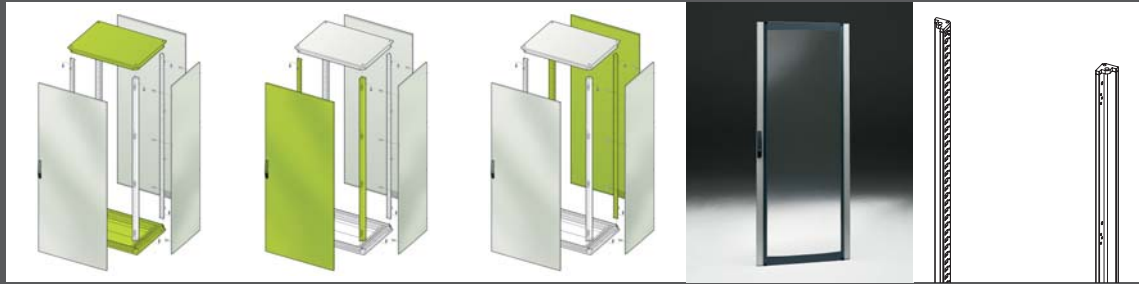
REAR PANEL  
WITH REAR UPRIGHTS

GLAZED DOOR  
WITH FRONT UPRIGHTS

PAIR OF FRONT  
UPRIGHTS  
FOR MULTIPLE DOORS  
CABINET

200 X 1800 X 500					
200 X 2000 X 600					
300 X 1600 X 400	ATTF030040	ATP0030160	ATRE030160		
300 X 1600 X 500	ATTF030050	ATP0030160	ATRE030160		
300 X 1600 X 600	ATTF030060	ATP0030160	ATRE030160		
300 X 1800 X 400	ATTF030040	ATP0030180	ATRE030180		
300 X 1800 X 500	ATTF030050	ATP0030180	ATRE030180		
300 X 1800 X 600	ATTF030060	ATP0030180	ATRE030180		
300 X 1800 X 800	ATTF030080	ATP0030180	ATRE030180		
300 X 2000 X 400	ATTF030040	ATP0030200	ATRE030200		
300 X 2000 X 500	ATTF030050	ATP0030200	ATRE030200		
300 X 2000 X 600	ATTF030060	ATP0030200	ATRE030200		
300 X 2000 X 800	ATTF030080	ATP0030200	ATRE030200		
300 X 2200 X 500	ATTF030050	ATP0030220	ATRE030220		
300 X 2200 X 600	ATTF030060	ATP0030220	ATRE030220		
300 X 2200 X 800	ATTF030080	ATP0030220	ATRE030220		
400 X 1600 X 400	ATTF040040	ATP0040160	ATRE040160		
400 X 1600 X 500	ATTF040050	ATP0040160	ATRE040160		
400 X 1600 X 600	ATTF040060	ATP0040160	ATRE040160		
400 X 1800 X 400	ATTF040040	ATP0040180	ATRE040180		
400 X 1800 X 500	ATTF040050	ATP0040180	ATRE040180		
400 X 1800 X 600	ATTF040060	ATP0040180	ATRE040180		
400 X 1800 X 800	ATTF040080	ATP0040180	ATRE040180		
400 X 2000 X 400	ATTF040040	ATP0040200	ATRE040200		
400 X 2000 X 500	ATTF040050	ATP0040200	ATRE040200		
400 X 2000 X 600	ATTF040060	ATP0040200	ATRE040200		
400 X 2000 X 800	ATTF040080	ATP0040200	ATRE040200		
400 X 2200 X 500	ATTF040050	ATP0040220	ATRE040220		
400 X 2200 X 600	ATTF040060	ATP0040220	ATRE040220		
400 X 2200 X 800	ATTF040080	ATP0040220	ATRE040220		
600 X 1400 X 400	ATTF060040	ATP0060140	ATRE060140	ATPX060140	
600 X 1400 X 500	ATTF060050	ATP0060140	ATRE060140	ATPX060140	
600 X 1600 X 400	ATTF060040	ATP0060160	ATRE060160	ATPX060160	
600 X 1600 X 500	ATTF060050	ATP0060160	ATRE060160	ATPX060160	
600 X 1600 X 600	ATTF060060	ATP0060160	ATRE060160	ATPX060160	
600 X 1800 X 400	ATTF060040	ATP0060180	ATRE060180	ATPX060180	ATMT001800
600 X 1800 X 500	ATTF060050	ATP0060180	ATRE060180	ATPX060180	ATMT001800
600 X 1800 X 600	ATTF060060	ATP0060180	ATRE060180	ATPX060180	ATMT001800

FLAT-PACK CABINET



DIMENSIONS  
W X H X D

ROOF AND BOTTOM

BLANK DOOR  
WITH FRONT UPRIGHTS

REAR PANEL  
WITH REAR UPRIGHTS

GLAZED DOOR  
WITH FRONT UPRIGHTS

PAIR OF FRONT  
UPRIGHTS  
FOR MULTIPLE DOORS  
CABINET

600 X 1800 X 800	ATTF060080	ATPO060180	ATRE060180	ATPX060180	ATMT001800
600 X 2000 X 400	ATTF060040	ATPO060200	ATRE060200	ATPX060200	ATMT002000
600 X 2000 X 500	ATTF060050	ATPO060200	ATRE060200	ATPX060200	ATMT002000
600 X 2000 X 600	ATTF060060	ATPO060200	ATRE060200	ATPX060200	ATMT002000
600 X 2000 X 800	ATTF060080	ATPO060200	ATRE060200	ATPX060200	ATMT002000
600 X 2000 X 1000					
600 X 2200 X 500	ATTF060050	ATPO060220	ATRE060220	ATPX060220	
600 X 2200 X 600	ATTF060060	ATPO060220	ATRE060220	ATPX060220	
600 X 2200 X 800	ATTF060080	ATPO060220	ATRE060220	ATPX060220	
800 X 1400 X 400	ATTF080040	ATPO080140	ATRE080140	ATPX080140	
800 X 1400 X 500	ATTF080050	ATPO080140	ATRE080140	ATPX080140	
800 X 1600 X 400	ATTF080040	ATPO080160	ATRE080160	ATPX080160	
800 X 1600 X 500	ATTF080050	ATPO080160	ATRE080160	ATPX080160	
800 X 1600 X 600	ATTF080060	ATPO080160	ATRE080160	ATPX080160	
800 X 1800 X 400	ATTF080040	ATPO080180	ATRE080180	ATPX080180	ATMT001800
800 X 1800 X 500	ATTF080050	ATPO080180	ATRE080180	ATPX080180	ATMT001800
800 X 1800 X 600	ATTF080060	ATPO080180	ATRE080180	ATPX080180	ATMT001800
800 X 1800 X 800	ATTF080080	ATPO080180	ATRE080180	ATPX080180	ATMT001800
800 X 2000 X 400	ATTF080040	ATPO080200	ATRE080200	ATPX080200	ATMT002000
800 X 2000 X 500	ATTF080050	ATPO080200	ATRE080200	ATPX080200	ATMT002000
800 X 2000 X 600	ATTF080060	ATPO080200	ATRE080200	ATPX080200	ATMT002000
800 X 2000 X 800	ATTF080080	ATPO080200	ATRE080200	ATPX080200	ATMT002000
800 X 2000 X 1000					
800 X 2200 X 500	ATTF080050	ATPO080220	ATRE080220	ATPX080220	
800 X 2200 X 600	ATTF080060	ATPO080220	ATRE080220	ATPX080220	
800 X 2200 X 800	ATTF080080	ATPO080220	ATRE080220	ATPX080220	
1000 X 1600 X 400	ATTF100040	ATPO100160*	ATRE100160	ATPX100160	
1000 X 1600 X 500	ATTF100050	ATPO100160*	ATRE100160	ATPX100160	
1000 X 1600 X 600	ATTF100060	ATPO100160*	ATRE100160	ATPX100160	
1000 X 1800 X 400	ATTF100040	ATPO100180*	ATRE100180	ATPX100180	
1000 X 1800 X 500	ATTF100050	ATPO100180*	ATRE100180	ATPX100180	
1000 X 1800 X 600	ATTF100060	ATPO100180*	ATRE100180	ATPX100180	
1000 X 1800 X 800	ATTF100080	ATPO100180*	ATRE100180	ATPX100180	
1000 X 2000 X 400	ATTF100040	ATPO100200*	ATRE100200	ATPX100200	
1000 X 2000 X 500	ATTF100050	ATPO100200*	ATRE100200	ATPX100200	
1000 X 2000 X 600	ATTF100060	ATPO100200*	ATRE100200	ATPX100200	
1000 X 2000 X 800	ATTF100080	ATPO100200*	ATRE100200	ATPX100200	
1000 X 2200 X 500	ATTF100050	ATPO100220*	ATRE100220	ATPX100220	

\* Single door; to order double door 500+500, please add the suffix DP (i.e. ATPO100160DP).



FLAT-PACK CABINET



DIMENSIONS  
W X H X D

ROOF AND BOTTOM

BLANK DOOR  
WITH FRONT UPRIGHTS

REAR PANEL  
WITH REAR UPRIGHTS

GLAZED DOOR  
WITH FRONT UPRIGHTS

PAIR OF FRONT  
UPRIGHTS  
FOR MULTIPLE DOORS  
CABINET

1000 X 2200 X 600	ATTF100060	ATPO100220*	ATRE100220	ATPX100220
1000 X 2200 X 800	ATTF100080	ATPO100220*	ATRE100220	ATPX100220
1200 X 1400 X 400	ATTF120040	ATPO120140	ATRE120140	
1200 X 1400 X 500	ATTF120050	ATPO120140	ATRE120140	
1200 X 1600 X 400	ATTF120040	ATPO120160	ATRE120160	
1200 X 1600 X 500	ATTF120050	ATPO120160	ATRE120160	
1200 X 1600 X 600	ATTF120060	ATPO120160	ATRE120160	
1200 X 1800 X 400	ATTF120040	ATPO120180	ATRE120180	
1200 X 1800 X 500	ATTF120050	ATPO120180	ATRE120180	
1200 X 1800 X 600	ATTF120060	ATPO120180	ATRE120180	
1200 X 1800 X 800	ATTF120080	ATPO120180	ATRE120180	
1200 X 2000 X 400	ATTF120040	ATPO120200	ATRE120200	
1200 X 2000 X 500	ATTF120050	ATPO120200	ATRE120200	
1200 X 2000 X 600	ATTF120060	ATPO120200	ATRE120200	
1200 X 2000 X 800	ATTF120080	ATPO120200	ATRE120200	
1200 X 2000 X 1000				
1200 X 2200 X 500	ATTF120050	ATPO120220	ATRE120220	
1200 X 2200 X 600	ATTF120060	ATPO120220	ATRE120220	
1200 X 2200 X 800	ATTF120080	ATPO120220	ATRE120220	
1400 X 2000 X 400	ATTF140040	ATPO140200	ATRE140200	
1400 X 2000 X 500	ATTF140050	ATPO140200	ATRE140200	
1400 X 2000 X 600	ATTF140060	ATPO140200	ATRE140200	
1400 X 2000 X 800	ATTF140080	ATPO140200	ATRE140200	
1600 X 1400 X 400	ATTF160040	ATPO160140	ATRE160140	
1600 X 1400 X 500	ATTF160050	ATPO160140	ATRE160140	
1600 X 2000 X 400	ATTF160040	ATPO160200	ATRE160200	
1600 X 2000 X 500	ATTF160050	ATPO160200	ATRE160200	
1600 X 2000 X 600	ATTF160060	ATPO160200	ATRE160200	
1600 X 2000 X 800	ATTF160080	ATPO160200	ATRE160200	

\* Single door; to order double door 500+500, please add the suffix DP (i.e. ATPO100160DP).

COMPLEMENTARY ACCESSORIES

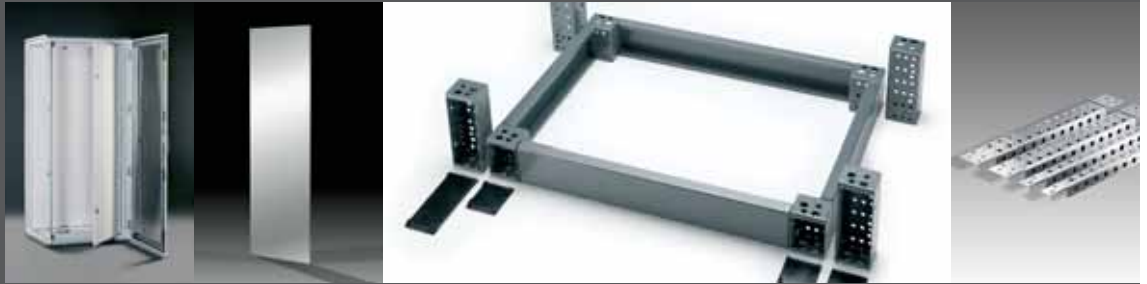


DIMENSIONS W X H X D	CABLE ENTRY MODULE FRONT OPENING (4)	CABLE ENTRY MODULE SIDE OPENING W=200mm	CABLE ENTRY MODULE SIDE OPENING W=300mm	FRONT INSERTED MOUNTING PLATE (5)	INTERMEDIATE PLATE	SIDE INSERTED MOUNTING PLATE
200 X 1800 X 500		ATRP021805				
200 X 2000 X 600		ATRP022006				
300 X 1600 X 400	ARETA031604					
300 X 1600 X 500	ARETA031605					
300 X 1600 X 600	ARETA031606					
300 X 1800 X 400	ARETA031804					
300 X 1800 X 500	ARETA031805		ATRP031805			
300 X 1800 X 600	ARETA031806		ATRP031806			
300 X 1800 X 800	ARETA031808		ATRP031808			
300 X 2000 X 400	ARETA032004					
300 X 2000 X 500	ARETA032005		ATRP032005			
300 X 2000 X 600	ARETA032006		ATRP032006			
300 X 2000 X 800	ARETA032008		ATRP032008			
300 X 2200 X 500	ARETA032205					
300 X 2200 X 600	ARETA032206					
300 X 2200 X 800	ARETA032208					
400 X 1600 X 400				ATPA-040160	ATPN-001600	ATPL-040160
400 X 1600 X 500				ATPA-040160	ATPN-001600	ATPL-040160
400 X 1600 X 600				ATPA-040160	ATPN-001600	ATPL-040160
400 X 1800 X 400				ATPA-040180	ATPN-001800	ATPL-040180
400 X 1800 X 500				ATPA-040180	ATPN-001800	ATPL-040180
400 X 1800 X 600				ATPA-040180	ATPN-001800	ATPL-040180
400 X 1800 X 800				ATPA-040180	ATPN-001800	ATPL-040180
400 X 2000 X 400				ATPA-040200	ATPN-002000	ATPL-040200
400 X 2000 X 500				ATPA-040200	ATPN-002000	ATPL-040200
400 X 2000 X 600				ATPA-040200	ATPN-002000	ATPL-040200
400 X 2000 X 800				ATPA-040200	ATPN-002000	ATPL-040200
400 X 2200 X 500				ATPA-040220	ATPN-002200	ATPL-040220
400 X 2200 X 600				ATPA-040220	ATPN-002200	ATPL-040220
400 X 2200 X 800				ATPA-040220	ATPN-002200	ATPL-040220
600 X 1400 X 400				ATPA-060140	ATPN-001400	ATPL-060140
600 X 1400 X 500				ATPA-060140	ATPN-001400	ATPL-060140
600 X 1600 X 400				ATPA-060160	ATPN-001600	ATPL-060160
600 X 1600 X 500				ATPA-060160	ATPN-001600	ATPL-060160
600 X 1600 X 600				ATPA-060160	ATPN-001600	ATPL-060160
600 X 1800 X 400				ATPA-060180	ATPN-001800	ATPL-060180
600 X 1800 X 500				ATPA-060180	ATPN-001800	ATPL-060180
600 X 1800 X 600				ATPA-060180	ATPN-001800	ATPL-060180

(4) supply includes cabinet frame, front door and rear panel.  
To be ordered separately plinth, side panels and eyebolts WTGS-001  
(5) to be ordered separately mounting accessories WTKB-002



COMPLEMENTARY ACCESSORIES



DIMENSIONS  
W X H X D

INNER DOOR

SIDE PANELS (6)

UNIVERSAL  
CORNER PIECES  
H=100 (7)

PLINTH H=100mm

FRONT  
CROSSPIECES (8)

SIDE  
CROSSPIECES (9)

FAST FIXING  
BRACKETS  
H=25mm (10)

DIMENSIONS W X H X D	INNER DOOR	SIDE PANELS (6)	UNIVERSAL CORNER PIECES H=100 (7)	PLINTH H=100mm	FRONT CROSSPIECES (8)	SIDE CROSSPIECES (9)	FAST FIXING BRACKETS H=25mm (10)
200 X 1800 X 500							
200 X 2000 X 600							
300 X 1600 X 400		ATFI040160	ATZE-A100	ATZE-T0300	ATZE-T0400		
300 X 1600 X 500		ATFI050160	ATZE-A100	ATZE-T0300	ATZE-T0500		
300 X 1600 X 600		ATFI060160	ATZE-A100	ATZE-T0300	ATZE-T0600		
300 X 1800 X 400		ATFI040180	ATZE-A100	ATZE-T0300	ATZE-T0400		
300 X 1800 X 500		ATFI050180	ATZE-A100	ATZE-T0300	ATZE-T0500		
300 X 1800 X 600		ATFI060180	ATZE-A100	ATZE-T0300	ATZE-T0600		
300 X 1800 X 800		ATFI080180	ATZE-A100	ATZE-T0300	ATZE-T0800		
300 X 2000 X 400		ATFI040200	ATZE-A100	ATZE-T0300	ATZE-T0400		
300 X 2000 X 500		ATFI050200	ATZE-A100	ATZE-T0300	ATZE-T0500		
300 X 2000 X 600		ATFI060200	ATZE-A100	ATZE-T0300	ATZE-T0600		
300 X 2000 X 800		ATFI080200	ATZE-A100	ATZE-T0300	ATZE-T0800		
300 X 2200 X 500		ATFI050220	ATZE-A100	ATZE-T0300	ATZE-T0500		
300 X 2200 X 600		ATFI060220	ATZE-A100	ATZE-T0300	ATZE-T0600		
300 X 2200 X 800		ATFI080220	ATZE-A100	ATZE-T0300	ATZE-T0800		
400 X 1600 X 400		ATFI040160	ATZE-A100	ATZE-T0400	ATZE-T0400	WTPR-025040R	
400 X 1600 X 500		ATFI050160	ATZE-A100	ATZE-T0400	ATZE-T0500	WTPR-025050R	
400 X 1600 X 600		ATFI060160	ATZE-A100	ATZE-T0400	ATZE-T0600	WTPR-025060R	
400 X 1800 X 400		ATFI040180	ATZE-A100	ATZE-T0400	ATZE-T0400	WTPR-025040R	
400 X 1800 X 500		ATFI050180	ATZE-A100	ATZE-T0400	ATZE-T0500	WTPR-025050R	
400 X 1800 X 600		ATFI060180	ATZE-A100	ATZE-T0400	ATZE-T0600	WTPR-025060R	
400 X 1800 X 800		ATFI080180	ATZE-A100	ATZE-T0400	ATZE-T0800	WTPR-025080R	
400 X 2000 X 400		ATFI040200	ATZE-A100	ATZE-T0400	ATZE-T0400	WTPR-025040R	
400 X 2000 X 500		ATFI050200	ATZE-A100	ATZE-T0400	ATZE-T0500	WTPR-025050R	
400 X 2000 X 600		ATFI060200	ATZE-A100	ATZE-T0400	ATZE-T0600	WTPR-025060R	
400 X 2000 X 800		ATFI080200	ATZE-A100	ATZE-T0400	ATZE-T0800	WTPR-025080R	
400 X 2200 X 500		ATFI050220	ATZE-A100	ATZE-T0400	ATZE-T0500	WTPR-025050R	
400 X 2200 X 600		ATFI060220	ATZE-A100	ATZE-T0400	ATZE-T0600	WTPR-025060R	
400 X 2200 X 800		ATFI080220	ATZE-A100	ATZE-T0400	ATZE-T0800	WTPR-025080R	
600 X 1400 X 400	ATPI060140	ATFI040140	ATZE-A100	ATZE-T0600	ATZE-T0400	WTPR-025040R	
600 X 1400 X 500	ATPI060140	ATFI050140	ATZE-A100	ATZE-T0600	ATZE-T0500	WTPR-025050R	
600 X 1600 X 400	ATPI060160	ATFI040160	ATZE-A100	ATZE-T0600	ATZE-T0400	WTPR-025040R	
600 X 1600 X 500	ATPI060160	ATFI050160	ATZE-A100	ATZE-T0600	ATZE-T0500	WTPR-025050R	
600 X 1600 X 600	ATPI060160	ATFI060160	ATZE-A100	ATZE-T0600	ATZE-T0600	WTPR-025060R	
600 X 1800 X 400	ATPI060180	ATFI040180	ATZE-A100	ATZE-T0600	ATZE-T0400	WTPR-025040R	
600 X 1800 X 500	ATPI060180	ATFI050180	ATZE-A100	ATZE-T0600	ATZE-T0500	WTPR-025050R	
600 X 1800 X 600	ATPI060180	ATFI060180	ATZE-A100	ATZE-T0600	ATZE-T0600	WTPR-025060R	

- (6) supply includes 2 pieces
- (7) supply includes 4 pieces
- (8) supply includes 2 pieces
- (9) supply includes 2 pieces
- (10) supply includes 4 pieces

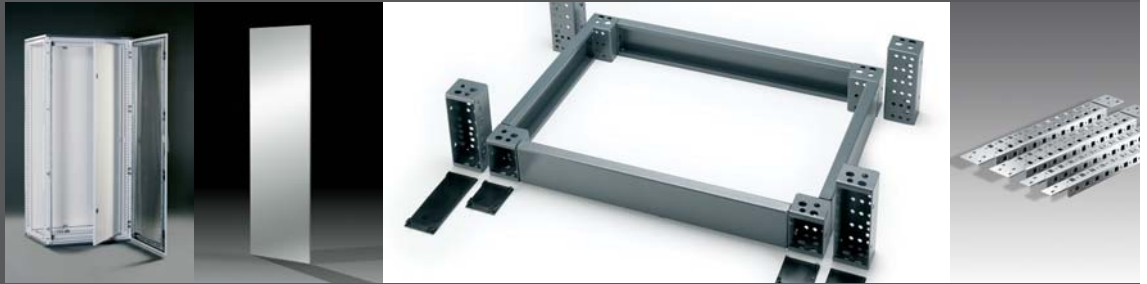
COMPLEMENTARY ACCESSORIES



DIMENSIONS W X H X D	CABLE ENTRY MODULE FRONT OPENING	CABLE ENTRY MODULE SIDE OPENING W=200mm	CABLE ENTRY MODULE SIDE OPENING W=300mm	FRONT INSERTED MOUNTING PLATE (5)	INTERMEDIATE PLATE	SIDE INSERTED MOUNTING PLATE
600 X 1800 X 800				ATPA-060180	ATPN-001800	ATPL-060180
600 X 2000 X 400				ATPA-060200	ATPN-002000	ATPL-060200
600 X 2000 X 500				ATPA-060200	ATPN-002000	ATPL-060200
600 X 2000 X 600				ATPA-060200	ATPN-002000	ATPL-060200
600 X 2000 X 800				ATPA-060200	ATPN-002000	ATPL-060200
600 X 2000 X 1000				ATPA-060200	ATPN-002000	ATPL-060200
600 X 2200 X 500				ATPA-060220	ATPN-002200	ATPL-060220
600 X 2200 X 600				ATPA-060220	ATPN-002200	ATPL-060220
600 X 2200 X 800				ATPA-060220	ATPN-002200	ATPL-060220
800 X 1400 X 400				ATPA-080140	ATPN-001400	ATPL-080140
800 X 1400 X 500				ATPA-080140	ATPN-001400	ATPL-080140
800 X 1600 X 400				ATPA-080160	ATPN-001600	ATPL-080160
800 X 1600 X 500				ATPA-080160	ATPN-001600	ATPL-080160
800 X 1600 X 600				ATPA-080160	ATPN-001600	ATPL-080160
800 X 1800 X 400				ATPA-080180	ATPN-001800	ATPL-080180
800 X 1800 X 500				ATPA-080180	ATPN-001800	ATPL-080180
800 X 1800 X 600				ATPA-080180	ATPN-001800	ATPL-080180
800 X 1800 X 800				ATPA-080180	ATPN-001800	ATPL-080180
800 X 2000 X 400				ATPA-080200	ATPN-002000	ATPL-080200
800 X 2000 X 500				ATPA-080200	ATPN-002000	ATPL-080200
800 X 2000 X 600				ATPA-080200	ATPN-002000	ATPL-080200
800 X 2000 X 800				ATPA-080200	ATPN-002000	ATPL-080200
800 X 2000 X 1000				ATPA-080200	ATPN-002000	ATPL-080200
800 X 2200 X 500				ATPA-080220	ATPN-002200	ATPL-080220
800 X 2200 X 600				ATPA-080220	ATPN-002200	ATPL-080220
800 X 2200 X 800				ATPA-080220	ATPN-002200	ATPL-080220
1000 X 1600 X 400				ATPA-100160	ATPN-001600	ATPL-100160
1000 X 1600 X 500				ATPA-100160	ATPN-001600	ATPL-100160
1000 X 1600 X 600				ATPA-100160	ATPN-001600	ATPL-100160
1000 X 1800 X 400				ATPA-100180	ATPN-001800	ATPL-100180
1000 X 1800 X 500				ATPA-100180	ATPN-001800	ATPL-100180
1000 X 1800 X 600				ATPA-100180	ATPN-001800	ATPL-100180
1000 X 1800 X 800				ATPA-100180	ATPN-001800	ATPL-100180
1000 X 2000 X 400				ATPA-100200	ATPN-002000	ATPL-100200
1000 X 2000 X 500				ATPA-100200	ATPN-002000	ATPL-100200
1000 X 2000 X 600				ATPA-100200	ATPN-002000	ATPL-100200
1000 X 2000 X 800				ATPA-100200	ATPN-002000	ATPL-100200
1000 X 2200 X 500				ATPA-100220	ATPN-002200	ATPL-100220

(5) to be ordered separately mounting accessories WTKB-002

COMPLEMENTARY ACCESSORIES



DIMENSIONS W X H X D	INNER DOOR	SIDE PANELS (6)	UNIVERSAL CORNER PIECES H=100 (7)	PLINTH H=100mm		FAST FIXING BRACKETS H=25mm (10)
				FRONT CROSSPIECES (8)	SIDE CROSSPIECES (9)	
600 X 1800 X 800	ATPI060180	ATFI080180	ATZE-A100	ATZE-T0600	ATZE-T0800	WTPR-025080R
600 X 2000 X 400	ATPI060200	ATFI040200	ATZE-A100	ATZE-T0600	ATZE-T0400	WTPR-025040R
600 X 2000 X 500	ATPI060200	ATFI050200	ATZE-A100	ATZE-T0600	ATZE-T0500	WTPR-025050R
600 X 2000 X 600	ATPI060200	ATFI060200	ATZE-A100	ATZE-T0600	ATZE-T0600	WTPR-025060R
600 X 2000 X 800	ATPI060200	ATFI080200	ATZE-A100	ATZE-T0600	ATZE-T0800	WTPR-025080R
600 X 2000 X 1000	ATPI060200	ATFI100200	ATZE-A100	ATZE-T0600	ATZE-T1000	WTPR-025100R
600 X 2200 X 500	ATPI060220	ATFI050220	ATZE-A100	ATZE-T0600	ATZE-T0500	WTPR-025050R
600 X 2200 X 600	ATPI060220	ATFI060220	ATZE-A100	ATZE-T0600	ATZE-T0600	WTPR-025060R
600 X 2200 X 800	ATPI060220	ATFI080220	ATZE-A100	ATZE-T0600	ATZE-T0800	WTPR-025080R
800 X 1400 X 400	ATPI080140	ATFI040140	ATZE-A100	ATZE-T0800	ATZE-T0400	WTPR-025040R
800 X 1400 X 500	ATPI080140	ATFI050140	ATZE-A100	ATZE-T0800	ATZE-T0500	WTPR-025050R
800 X 1600 X 400	ATPI080160	ATFI040160	ATZE-A100	ATZE-T0800	ATZE-T0400	WTPR-025040R
800 X 1600 X 500	ATPI080160	ATFI050160	ATZE-A100	ATZE-T0800	ATZE-T0500	WTPR-025050R
800 X 1600 X 600	ATPI080160	ATFI060160	ATZE-A100	ATZE-T0800	ATZE-T0600	WTPR-025060R
800 X 1800 X 400	ATPI080180	ATFI040180	ATZE-A100	ATZE-T0800	ATZE-T0400	WTPR-025040R
800 X 1800 X 500	ATPI080180	ATFI050180	ATZE-A100	ATZE-T0800	ATZE-T0500	WTPR-025050R
800 X 1800 X 600	ATPI080180	ATFI060180	ATZE-A100	ATZE-T0800	ATZE-T0600	WTPR-025060R
800 X 1800 X 800	ATPI080180	ATFI080180	ATZE-A100	ATZE-T0800	ATZE-T0800	WTPR-025080R
800 X 2000 X 400	ATPI080200	ATFI040200	ATZE-A100	ATZE-T0800	ATZE-T0400	WTPR-025040R
800 X 2000 X 500	ATPI080200	ATFI050200	ATZE-A100	ATZE-T0800	ATZE-T0500	WTPR-025050R
800 X 2000 X 600	ATPI080200	ATFI060200	ATZE-A100	ATZE-T0800	ATZE-T0600	WTPR-025060R
800 X 2000 X 800	ATPI080200	ATFI080200	ATZE-A100	ATZE-T0800	ATZE-T0800	WTPR-025080R
800 X 2000 X 1000	ATPI080200	ATFI100200	ATZE-A100	ATZE-T0800	ATZE-T1000	WTPR-025100R
800 X 2200 X 500	ATPI080220	ATFI050220	ATZE-A100	ATZE-T0800	ATZE-T0500	WTPR-025050R
800 X 2200 X 600	ATPI080220	ATFI060220	ATZE-A100	ATZE-T0800	ATZE-T0600	WTPR-025060R
800 X 2200 X 800	ATPI080220	ATFI080220	ATZE-A100	ATZE-T0800	ATZE-T0800	WTPR-025080R
1000 X 1600 X 400	ATPI100160	ATFI040160	ATZE-A100	ATZE-T1000	ATZE-T0400	WTPR-025040R
1000 X 1600 X 500	ATPI100160	ATFI050160	ATZE-A100	ATZE-T1000	ATZE-T0500	WTPR-025050R
1000 X 1600 X 600	ATPI100160	ATFI060160	ATZE-A100	ATZE-T1000	ATZE-T0600	WTPR-025060R
1000 X 1800 X 400	ATPI100180	ATFI040180	ATZE-A100	ATZE-T1000	ATZE-T0400	WTPR-025040R
1000 X 1800 X 500	ATPI100180	ATFI050180	ATZE-A100	ATZE-T1000	ATZE-T0500	WTPR-025050R
1000 X 1800 X 600	ATPI100180	ATFI060180	ATZE-A100	ATZE-T1000	ATZE-T0600	WTPR-025060R
1000 X 1800 X 800	ATPI100180	ATFI080180	ATZE-A100	ATZE-T1000	ATZE-T0800	WTPR-025080R
1000 X 2000 X 400	ATPI100200	ATFI040200	ATZE-A100	ATZE-T1000	ATZE-T0400	WTPR-025040R
1000 X 2000 X 500	ATPI100200	ATFI050200	ATZE-A100	ATZE-T1000	ATZE-T0500	WTPR-025050R
1000 X 2000 X 600	ATPI100200	ATFI060200	ATZE-A100	ATZE-T1000	ATZE-T0600	WTPR-025060R
1000 X 2000 X 800	ATPI100200	ATFI080200	ATZE-A100	ATZE-T1000	ATZE-T0800	WTPR-025080R
1000 X 2200 X 500	ATPI100220	ATFI050220	ATZE-A100	ATZE-T1000	ATZE-T0500	WTPR-025050R

(6) supply includes 2 pieces  
 (7) supply includes 4 pieces  
 (8) supply includes 2 pieces  
 (9) supply includes 2 pieces  
 (10) supply includes 4 pieces

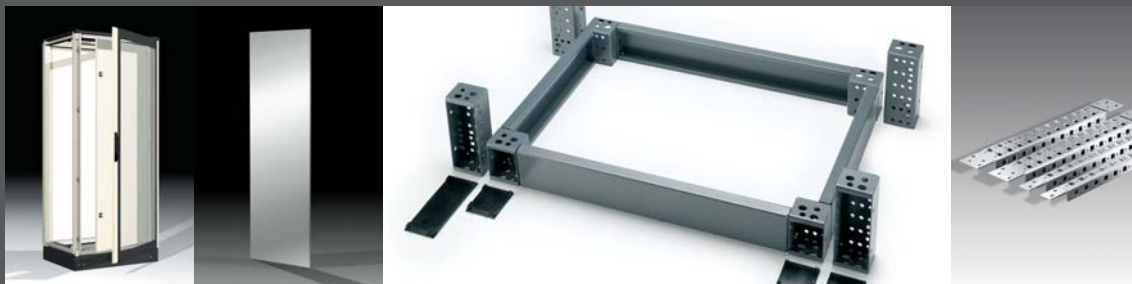
COMPLEMENTARY ACCESSORIES



DIMENSIONS W X H X D	CABLE ENTRY MODULE FRONT OPENING	CABLE ENTRY MODULE SIDE OPENING W=200mm	CABLE ENTRY MODULE SIDE OPENING W=300mm	FRONT INSERTED MOUNTING PLATE (5)	INTERMEDIATE PLATE	SIDE INSERTED MOUNTING PLATE
1000 X 2200 X 600				ATPA-100220	ATPN-002200	ATPL-100220
1000 X 2200 X 800				ATPA-100220	ATPN-002200	ATPL-100220
1200 X 1400 X 400				ATPA-120140	ATPN-001400	ATPL-120140
1200 X 1400 X 500				ATPA-120140	ATPN-001400	ATPL-120140
1200 X 1600 X 400				ATPA-120160	ATPN-001600	ATPL-120160
1200 X 1600 X 500				ATPA-120160	ATPN-001600	ATPL-120160
1200 X 1600 X 600				ATPA-120160	ATPN-001600	ATPL-120160
1200 X 1800 X 400				ATPA-120180	ATPN-001800	ATPL-120180
1200 X 1800 X 500				ATPA-120180	ATPN-001800	ATPL-120180
1200 X 1800 X 600				ATPA-120180	ATPN-001800	ATPL-120180
1200 X 1800 X 800				ATPA-120180	ATPN-001800	ATPL-120180
1200 X 2000 X 400				ATPA-120200	ATPN-002000	ATPL-120200
1200 X 2000 X 500				ATPA-120200	ATPN-002000	ATPL-120200
1200 X 2000 X 600				ATPA-120200	ATPN-002000	ATPL-120200
1200 X 2000 X 800				ATPA-120200	ATPN-002000	ATPL-120200
1200 X 2000 X 1000				ATPA-120200	ATPN-002000	ATPL-120200
1200 X 2200 X 500				ATPA-120220	ATPN-002200	ATPL-120220
1200 X 2200 X 600				ATPA-120220	ATPN-002200	ATPL-120220
1200 X 2200 X 800				ATPA-120220	ATPN-002200	ATPL-120220
1400 X 2000 X 400				ATPA-140200	ATPN-002000	ATPL-140200
1400 X 2000 X 500				ATPA-140200	ATPN-002000	ATPL-140200
1400 X 2000 X 600				ATPA-140200	ATPN-002000	ATPL-140200
1400 X 2000 X 800				ATPA-140200	ATPN-002000	ATPL-140200
1600 X 1400 X 400				ATPA-160140	ATPN-001400	ATPL-160140
1600 X 1400 X 500				ATPA-160140	ATPN-001400	ATPL-160140
1600 X 2000 X 400				ATPA-160200	ATPN-002000	ATPL-160200
1600 X 2000 X 500				ATPA-160200	ATPN-002000	ATPL-160200
1600 X 2000 X 600				ATPA-160200	ATPN-002000	ATPL-160200
1600 X 2000 X 800				ATPA-160200	ATPN-002000	ATPL-160200

(5) to be ordered separately mounting accessories WTKB-002

COMPLEMENTARY ACCESSORIES



DIMENSIONS W X H X D	INNER DOOR	SIDE PANELS (6)	UNIVERSAL CORNER PIECES H=100 (7)	PLINTH H=100mm		FAST FIXING BRACKETS H=25mm (10)
				FRONT CROSSPIECES (8)	SIDE CROSSPIECES (9)	
1000 X 2200 X 600	ATPI100220	ATFI060220	ATZE-A100	ATZE-T1000	ATZE-T0600	WTPR-025060R
1000 X 2200 X 800	ATPI100220	ATFI080220	ATZE-A100	ATZE-T1000	ATZE-T0800	WTPR-025080R
1200 X 1400 X 400		ATFI040140	ATZE-A100	ATZE-T1200	ATZE-T0400	WTPR-025040R
1200 X 1400 X 500		ATFI050140	ATZE-A100	ATZE-T1200	ATZE-T0500	WTPR-025050R
1200 X 1600 X 400		ATFI040160	ATZE-A100	ATZE-T1200	ATZE-T0400	WTPR-025040R
1200 X 1600 X 500		ATFI050160	ATZE-A100	ATZE-T1200	ATZE-T0500	WTPR-025050R
1200 X 1600 X 600		ATFI060160	ATZE-A100	ATZE-T1200	ATZE-T0600	WTPR-025060R
1200 X 1800 X 400		ATFI040180	ATZE-A100	ATZE-T1200	ATZE-T0400	WTPR-025040R
1200 X 1800 X 500		ATFI050180	ATZE-A100	ATZE-T1200	ATZE-T0500	WTPR-025050R
1200 X 1800 X 600		ATFI060180	ATZE-A100	ATZE-T1200	ATZE-T0600	WTPR-025060R
1200 X 1800 X 800		ATFI080180	ATZE-A100	ATZE-T1200	ATZE-T0800	WTPR-025080R
1200 X 2000 X 400		ATFI040200	ATZE-A100	ATZE-T1200	ATZE-T0400	WTPR-025040R
1200 X 2000 X 500		ATFI050200	ATZE-A100	ATZE-T1200	ATZE-T0500	WTPR-025050R
1200 X 2000 X 600		ATFI060200	ATZE-A100	ATZE-T1200	ATZE-T0600	WTPR-025060R
1200 X 2000 X 800		ATFI080200	ATZE-A100	ATZE-T1200	ATZE-T0800	WTPR-025080R
1200 X 2000 X 1000		ATFI100200	ATZE-A100	ATZE-T1200	ATZE-T1000	WTPR-025100R
1200 X 2200 X 500		ATFI050220	ATZE-A100	ATZE-T1200	ATZE-T0500	WTPR-025050R
1200 X 2200 X 600		ATFI060220	ATZE-A100	ATZE-T1200	ATZE-T0600	WTPR-025060R
1200 X 2200 X 800		ATFI080220	ATZE-A100	ATZE-T1200	ATZE-T0800	WTPR-025080R
1400 X 2000 X 400		ATFI040200	ATZE-A100	ATZE-T1400	ATZE-T0400	WTPR-025040R
1400 X 2000 X 500		ATFI050200	ATZE-A100	ATZE-T1400	ATZE-T0500	WTPR-025050R
1400 X 2000 X 600		ATFI060200	ATZE-A100	ATZE-T1400	ATZE-T0600	WTPR-025060R
1400 X 2000 X 800		ATFI080200	ATZE-A100	ATZE-T1400	ATZE-T0800	WTPR-025080R
1600 X 1400 X 400		ATFI040140	ATZE-A100	ATZE-T1600	ATZE-T0400	WTPR-025040R
1600 X 1400 X 500		ATFI050140	ATZE-A100	ATZE-T1600	ATZE-T0500	WTPR-025050R
1600 X 2000 X 400		ATFI040200	ATZE-A100	ATZE-T1600	ATZE-T0400	WTPR-025040R
1600 X 2000 X 500		ATFI050200	ATZE-A100	ATZE-T1600	ATZE-T0500	WTPR-025050R
1600 X 2000 X 600		ATFI060200	ATZE-A100	ATZE-T1600	ATZE-T0600	WTPR-025060R
1600 X 2000 X 800		ATFI080200	ATZE-A100	ATZE-T1600	ATZE-T0800	WTPR-025080R

(6) supply includes 2 pieces  
 (7) supply includes 4 pieces  
 (8) supply includes 2 pieces  
 (9) supply includes 2 pieces  
 (10) supply includes 4 pieces



## CHARACTERISTICS

### - STRUCTURE

Profile and rails are made up of a unique closed profile manufactured from 15/10 sheet steel folded, stapled and welded, with rounded edges.

The frame corners are manufactured with orthogonal joints laser welded to vertical upright rails and horizontal rails for the roof and bottom.

Only 8 high resistance screws are necessary to mount the structure, while two position pins allow the easy mounting of the two parts of the joint.

### PAINT FINISH

ETA standard epoxy polyester powder coating.

- structure: RAL 7035 smooth finish
- door and rear panel: RAL 7035 textured finish.
- roof and bottom: RAL 7025 textured finish.

### ASSEMBLED CABINET (PR)

- structure manufactured from 15/10 sheet steel
- door manufactured from 20/10 sheet steel with stiffening frame, complete with Ø 3mm double bar locking system
- rear panel manufactured from 15/10 sheet steel
- removable roof manufactured from 15/10 sheet steel
- bottom with adjustable cable entry manufactured from 15/10 sheet steel.

### FLAT-PACK CABINET

#### (ASSEMBLY WITH 8 SCREWS ONLY)

- composition to be assembled complying with customers requests
- panels and doors are supplied together with two vertical uprights complete with accessories.

### CONFORMITY AND APPROVAL



## MAIN ACCESSORIES



ATPA front inserted mounting plate (page 36)  
alternatively ATPL side inserted mounting plate (page 39)



ATFI side panels (page 44)



ATZE modular plinth (page 45)



eyebolts (page 46)

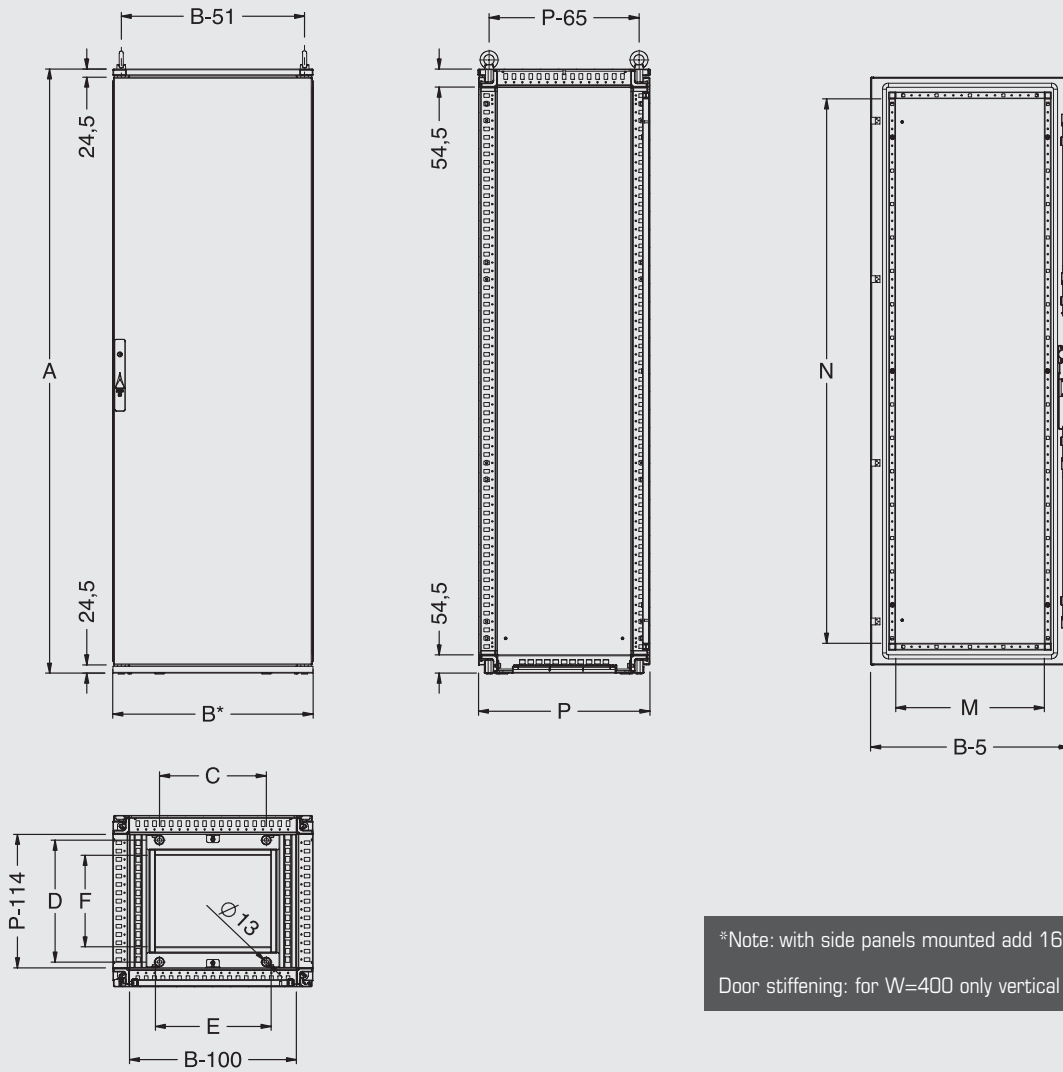


lifting brackets (page 46)

### PROTECTION RATINGS

- IP 55 complying with IEC EN62208; EN60529
- NEMA 12 complying with UL508A; UL50
- protection degree guaranteed by the two-component polyurethane foam seal (for technical details, refer to page 260)
- impact resistance IK10 complying with IEC EN62208; EN50102.





\*Note: with side panels mounted add 16mm.

Door stiffening: for W=400 only vertical profiles

## DIMENSIONAL SPECIFICATIONS

WIDTH	DIMENSIONS		CABINET DIMENSIONS			FLOOR FIXING		CABLE ENTRY		DOOR SPACE	
	HEIGHT	DEPTH	B*	A	P	C	D	E	F	M	N
400	1600	400	400	1609	414	120	265	145	174	245	-
400	1600	500	400	1609	514	120	365	145	274	245	-
400	1600	600	400	1609	614	120	465	145	374	245	-
400	1800	400	400	1809	414	120	265	145	174	245	-
400	1800	500	400	1809	514	120	365	145	274	245	-
400	1800	600	400	1809	614	120	465	145	374	245	-
400	1800	800	400	1809	814	120	665	145	574	245	-
400	2000	400	400	2009	414	120	265	145	174	245	-
400	2000	500	400	2009	514	120	365	145	274	245	-
400	2000	600	400	2009	614	120	465	145	374	245	-
400	2000	800	400	2009	814	120	665	145	574	245	-
400	2200	500	400	2209	514	120	365	145	274	245	-
400	2200	600	400	2209	614	120	465	145	374	245	-
400	2200	800	400	2209	814	120	665	145	574	245	-
600	1400	400	600	1409	414	320	265	345	174	445	1230
600	1400	500	600	1409	514	320	365	345	274	445	1230
600	1600	400	600	1609	414	320	265	345	174	445	1430
600	1600	500	600	1609	514	320	365	345	274	445	1430
600	1600	600	600	1609	614	320	465	345	374	445	1430
600	1600	800	600	1609	814	320	665	345	574	445	1430
600	1800	400	600	1809	414	320	265	345	174	445	1630
600	1800	500	600	1809	514	320	365	345	274	445	1630
600	1800	600	600	1809	614	320	465	345	374	445	1630
600	1800	800	600	1809	814	320	665	345	574	445	1630
600	2000	400	600	2009	414	320	265	345	174	445	1830
600	2000	500	600	2009	514	320	365	345	274	445	1830
600	2000	600	600	2009	614	320	465	345	374	445	1830
600	2000	800	600	2009	814	320	665	345	574	445	1830
600	2000	1000	600	2009	1014	320	865	345	774	445	1830
600	2200	500	600	2209	514	320	365	345	274	445	2030
600	2200	600	600	2209	614	320	465	345	374	445	2030
600	2200	800	600	2209	814	320	665	345	574	445	2030
800	1400	400	800	1409	414	520	265	545	174	645	1230
800	1400	500	800	1409	514	520	365	545	274	645	1230
800	1600	400	800	1609	414	520	265	545	174	645	1430
800	1600	500	800	1609	514	520	365	545	274	645	1430
800	1600	600	800	1609	614	520	465	545	374	645	1430
800	1800	400	800	1809	414	520	265	545	174	645	1630
800	1800	500	800	1809	514	520	365	545	274	645	1630
800	1800	600	800	1809	614	520	465	545	374	645	1630
800	1800	800	800	1809	814	520	665	545	574	645	1630
800	2000	400	800	2009	414	520	265	545	174	645	1830
800	2000	500	800	2009	514	520	365	545	274	645	1830
800	2000	600	800	2009	614	520	465	545	374	645	1830
800	2000	800	800	2009	814	520	665	545	574	645	1830
800	2000	1000	800	2009	1014	520	865	545	774	645	1830
800	2200	500	800	2209	514	520	365	545	274	645	2030
800	2200	600	800	2209	614	520	465	545	374	645	2030
800	2200	800	800	2209	814	520	665	545	574	645	2030
1000	1600	400	1000	1609	414	720	265	745	174	845	1430
1000	1600	500	1000	1609	514	720	365	745	274	845	1430
1000	1600	600	1000	1609	614	720	465	745	374	845	1430
1000	1800	400	1000	1809	414	720	265	745	174	845	1630
1000	1800	500	1000	1809	514	720	365	745	274	845	1630
1000	1800	600	1000	1809	614	720	465	745	374	845	1630
1000	1800	800	1000	1809	814	720	665	745	574	845	1630
1000	2000	400	1000	2009	414	720	265	745	174	845	1830
1000	2000	500	1000	2009	514	720	365	745	274	845	1830
1000	2000	600	1000	2009	614	720	465	745	374	845	1830
1000	2000	800	1000	2009	814	720	665	745	574	845	1830
1000	2200	500	1000	2209	514	720	365	745	274	845	2030
1000	2200	600	1000	2209	614	720	465	745	374	845	2030
1000	2200	800	1000	2209	814	720	665	745	574	845	2030

## ARETA 400 WIDE

## CODES FOR ASSEMBLED CABINET

CABINET DIMENSIONS			CABINET WITH FRONTAL BLANK DOOR + REAR PANEL	CABINET WITH FRONTAL BLANK DOOR + REAR BLANK DOOR
WIDTH	HEIGHT	DEPTH		
400	1600	400	ARETA041604PR	ARETA041604DP
400	1600	500	ARETA041605PR	ARETA041605DP
400	1600	600	ARETA041606PR	ARETA041606DP
400	1800	400	ARETA041804PR	ARETA041804DP
400	1800	500	ARETA041805PR	ARETA041805DP
400	1800	600	ARETA041806PR	ARETA041806DP
400	1800	800	ARETA041808PR	ARETA041808DP
400	2000	400	ARETA042004PR	ARETA042004DP
400	2000	500	ARETA042005PR	ARETA042005DP
400	2000	600	ARETA042006PR	ARETA042006DP
400	2000	800	ARETA042008PR	ARETA042008DP
400	2200	500	ARETA042205PR	ARETA042205DP
400	2200	600	ARETA042206PR	ARETA042206DP
400	2200	800	ARETA042208PR	ARETA042208DP

## CODES FOR FLAT-PACK CABINET

CABINET DIMENSIONS			ROOF + BOTTOM	BLANK DOOR + FRONT UPRIGHTS	REAR PANEL + REAR UPRIGHTS
WIDTH	HEIGHT	DEPTH			
400	1600	400	ATTF040040	ATP0040160	ATRE040160
400	1600	500	ATTF040050	ATP0040160	ATRE040160
400	1600	600	ATTF040060	ATP0040160	ATRE040160
400	1800	400	ATTF040040	ATP0040180	ATRE040180
400	1800	500	ATTF040050	ATP0040180	ATRE040180
400	1800	600	ATTF040060	ATP0040180	ATRE040180
400	1800	800	ATTF040080	ATP0040180	ATRE040180
400	2000	400	ATTF040040	ATP0040200	ATRE040200
400	2000	500	ATTF040050	ATP0040200	ATRE040200
400	2000	600	ATTF040060	ATP0040200	ATRE040200
400	2000	800	ATTF040080	ATP0040200	ATRE040200
400	2200	500	ATTF040050	ATP0040220	ATRE040220
400	2200	600	ATTF040060	ATP0040220	ATRE040220
400	2200	800	ATTF040080	ATP0040220	ATRE040220

# ARETA 600 WIDE

## CODES FOR ASSEMBLED CABINET

CABINET DIMENSIONS			CABINET WITH FRONTAL BLANK DOOR + REAR PANEL	CABINET WITH FRONTAL GLAZED DOOR + REAR PANEL	CABINET WITH FRONTAL BLANK DOOR + REAR BLANK DOOR
WIDTH	HEIGHT	DEPTH			
600	1400	400	ARETA061404PR	ARETA061404PX	ARETA061404DP
600	1400	500	ARETA061405PR	ARETA061405PX	ARETA061405DP
600	1600	400	ARETA061604PR	ARETA061604PX	ARETA061604DP
600	1600	500	ARETA061605PR	ARETA061605PX	ARETA061605DP
600	1600	600	ARETA061606PR	ARETA061606PX	ARETA061606DP
600	1800	400	ARETA061804PR	ARETA061804PX	ARETA061804DP
600	1800	500	ARETA061805PR	ARETA061805PX	ARETA061805DP
600	1800	600	ARETA061806PR	ARETA061806PX	ARETA061806DP
600	1800	800	ARETA061808PR	ARETA061808PX	ARETA061808DP
600	2000	400	ARETA062004PR	ARETA062004PX	ARETA062004DP
600	2000	500	ARETA062005PR	ARETA062005PX	ARETA062005DP
600	2000	600	ARETA062006PR	ARETA062006PX	ARETA062006DP
600	2000	800	ARETA062008PR	ARETA062008PX	ARETA062008DP
600	2000	1000	ARETA062010PR	-	-
600	2200	500	ARETA062205PR	ARETA062205PX	ARETA062205DP
600	2200	600	ARETA062206PR	ARETA062206PX	ARETA062206DP
600	2200	800	ARETA062208PR	ARETA062208PX	ARETA062208DP

## CODES FOR FLAT-PACK CABINET

CABINET DIMENSIONS			ROOF + BOTTOM	BLANK DOOR + FRONT UPRIGHTS	GLAZED DOOR + FRONT UPRIGHTS	REAR PANEL + REAR UPRIGHTS
WIDTH	HEIGHT	DEPTH				
600	1400	400	ATTF060040	ATP0060140	ATPX060140	ATRE060140
600	1400	500	ATTF060050	ATP0060140	ATPX060140	ATRE060140
600	1600	400	ATTF060040	ATP0060160	ATPX060160	ATRE060160
600	1600	500	ATTF060050	ATP0060160	ATPX060160	ATRE060160
600	1600	600	ATTF060060	ATP0060160	ATPX060160	ATRE060160
600	1800	400	ATTF060040	ATP0060180	ATPX060180	ATRE060180
600	1800	500	ATTF060050	ATP0060180	ATPX060180	ATRE060180
600	1800	600	ATTF060060	ATP0060180	ATPX060180	ATRE060180
600	1800	800	ATTF060080	ATP0060180	ATPX060180	ATRE060180
600	2000	400	ATTF060040	ATP0060200	ATPX060200	ATRE060200
600	2000	500	ATTF060050	ATP0060200	ATPX060200	ATRE060200
600	2000	600	ATTF060060	ATP0060200	ATPX060200	ATRE060200
600	2000	800	ATTF060080	ATP0060200	ATPX060200	ATRE060200
600	2200	500	ATTF060050	ATP0060220	ATPX060220	ATRE060220
600	2200	600	ATTF060060	ATP0060220	ATPX060220	ATRE060220
600	2200	800	ATTF060080	ATP0060220	ATPX060220	ATRE060220

## ARETA 800 WIDE

## CODES FOR ASSEMBLED CABINET

CABINET DIMENSIONS			CABINET WITH FRONTAL BLANK DOOR + REAR PANEL	CABINET WITH FRONTAL GLAZED DOOR + REAR PANEL	CABINET WITH FRONTAL BLANK DOOR + REAR BLANK DOOR
WIDTH	HEIGHT	DEPTH			
800	1400	400	ARETA081404PR	ARETA081404PX	ARETA081404DP
800	1400	500	ARETA081405PR	ARETA081405PX	ARETA081405DP
800	1600	400	ARETA081604PR	ARETA081604PX	ARETA081604DP
800	1600	500	ARETA081605PR	ARETA081605PX	ARETA081605DP
800	1600	600	ARETA081606PR	ARETA081606PX	ARETA081606DP
800	1800	400	ARETA081804PR	ARETA081804PX	ARETA081804DP
800	1800	500	ARETA081805PR	ARETA081805PX	ARETA081805DP
800	1800	600	ARETA081806PR	ARETA081806PX	ARETA081806DP
800	1800	800	ARETA081808PR	ARETA081808PX	ARETA081808DP
800	2000	400	ARETA082004PR	ARETA082004PX	ARETA082004DP
800	2000	500	ARETA082005PR	ARETA082005PX	ARETA082005DP
800	2000	600	ARETA082006PR	ARETA082006PX	ARETA082006DP
800	2000	800	ARETA082008PR	ARETA082008PX	ARETA082008DP
800	2000	1000	ARETA082010PR	-	-
800	2200	500	ARETA082205PR	ARETA082205PX	ARETA082205DP
800	2200	600	ARETA082206PR	ARETA082206PX	ARETA082206DP
800	2200	800	ARETA082208PR	ARETA082208PX	ARETA082208DP

## CODES FOR FLAT-PACK CABINET

CABINET DIMENSIONS			ROOF + BOTTOM	BLANK DOOR + FRONT UPRIGHTS	GLAZED DOOR + FRONT UPRIGHTS	REAR PANEL + REAR UPRIGHTS
WIDTH	HEIGHT	DEPTH				
800	1400	400	ATTF080040	ATP0080140	ATPX080140	ATRE080140
800	1400	500	ATTF080050	ATP0080140	ATPX080140	ATRE080140
800	1600	400	ATTF080040	ATP0080160	ATPX080160	ATRE080160
800	1600	500	ATTF080050	ATP0080160	ATPX080160	ATRE080160
800	1600	600	ATTF080060	ATP0080160	ATPX080160	ATRE080160
800	1800	400	ATTF080040	ATP0080180	ATPX080180	ATRE080180
800	1800	500	ATTF080050	ATP0080180	ATPX080180	ATRE080180
800	1800	600	ATTF080060	ATP0080180	ATPX080180	ATRE080180
800	1800	800	ATTF080080	ATP0080180	ATPX080180	ATRE080180
800	2000	400	ATTF080040	ATP0080200	ATPX080200	ATRE080200
800	2000	500	ATTF080050	ATP0080200	ATPX080200	ATRE080200
800	2000	600	ATTF080060	ATP0080200	ATPX080200	ATRE080200
800	2000	800	ATTF080080	ATP0080200	ATPX080200	ATRE080200
800	2200	500	ATTF080050	ATP0080220	ATPX080220	ATRE080220
800	2200	600	ATTF080060	ATP0080220	ATPX080220	ATRE080220
800	2200	800	ATTF080080	ATP0080220	ATPX080220	ATRE080220

# ARETA 1000 WIDE

## CODES FOR ASSEMBLED CABINET

CABINET DIMENSIONS			CABINET WITH FRONTAL BLANK DOOR + REAR PANEL	CABINET WITH FRONTAL GLAZED DOOR + REAR PANEL	CABINET WITH FRONTAL BLANK DOOR + REAR BLANK DOOR
WIDTH	HEIGHT	DEPTH			
1000	1600	400	ARETA101604PR	ARETA101604PX	ARETA101604DP
1000	1600	500	ARETA101605PR	ARETA101605PX	ARETA101605DP
1000	1600	600	ARETA101606PR	ARETA101606PX	ARETA101606DP
1000	1800	400	ARETA101804PR	ARETA101804PX	ARETA101804DP
1000	1800	500	ARETA101805PR	ARETA101805PX	ARETA101805DP
1000	1800	600	ARETA101806PR	ARETA101806PX	ARETA101806DP
1000	1800	800	ARETA101808PR	ARETA101808PX	ARETA101808DP
1000	2000	400	ARETA102004PR	ARETA102004PX	ARETA102004DP
1000	2000	500	ARETA102005PR	ARETA102005PX	ARETA102005DP
1000	2000	600	ARETA102006PR	ARETA102006PX	ARETA102006DP
1000	2000	800	ARETA102008PR	ARETA102008PX	ARETA102008DP
1000	2200	500	ARETA102205PR	ARETA102205PX	ARETA102205DP
1000	2200	600	ARETA102206PR	ARETA102206PX	ARETA102206DP
1000	2200	800	ARETA102208PR	ARETA102208PX	ARETA102208DP

## CODES FOR FLAT-PACK CABINET

CABINET DIMENSIONS			ROOF + BOTTOM	BLANK DOOR W=1000* + FRONT UPRIGHTS	*OR DOUBLE BLANK DOOR 500+500	GLAZED DOOR + FRONT UPRIGHTS	REAR PANEL + REAR UPRIGHTS
WIDTH	HEIGHT	DEPTH					
1000	1600	400	ATTF100040	ATPO100160	ATPO100160DP	ATPX100160	ATRE100160
1000	1600	500	ATTF100050	ATPO100160	ATPO100160DP	ATPX100160	ATRE100160
1000	1600	600	ATTF100060	ATPO100160	ATPO100160DP	ATPX100160	ATRE100160
1000	1800	400	ATTF100040	ATPO100180	ATPO100180DP	ATPX100180	ATRE100180
1000	1800	500	ATTF100050	ATPO100180	ATPO100180DP	ATPX100180	ATRE100180
1000	1800	600	ATTF100060	ATPO100180	ATPO100180DP	ATPX100180	ATRE100180
1000	1800	800	ATTF100080	ATPO100180	ATPO100180DP	ATPX100180	ATRE100180
1000	2000	400	ATTF100040	ATPO100200	ATPO100200DP	ATPX100200	ATRE100200
1000	2000	500	ATTF100050	ATPO100200	ATPO100200DP	ATPX100200	ATRE100200
1000	2000	600	ATTF100060	ATPO100200	ATPO100200DP	ATPX100200	ATRE100200
1000	2000	800	ATTF100080	ATPO100200	ATPO100200DP	ATPX100200	ATRE100200
1000	2200	500	ATTF100050	ATPO100220	ATPO100220DP	ATPX100220	ATRE100220
1000	2200	600	ATTF100060	ATPO100220	ATPO100220DP	ATPX100220	ATRE100220
1000	2200	800	ATTF100080	ATPO100220	ATPO100220DP	ATPX100220	ATRE100220





Some details of the Areta enclosures with double door:

- provided with a safety handle, the closing system is particularly effective
- the cremone bolt locking unit completes the cabinet closure at both ends
- a rear view of the doors with closed rabbet
- the new split cable entry for double doors



## MAIN ACCESSORIES



ATPA front inserted mounting plate (page 36)  
alternatively ATPL side inserted mounting plate  
(page 39)



ATFI side panels (page 44)



ATZE modular plinth (page 45)



eyebolts (page 46)



lifting brackets (page 46)

## CHARACTERISTICS

### - STRUCTURE

Profile and rails are made up of a unique closed profile manufactured from 15/10 sheet steel folded, stapled and welded, with rounded edges.

The frame corners are manufactured with orthogonal joints laser welded to vertical upright rails and horizontal rails for the roof and bottom.

Only 8 high resistance screws are necessary to mount the structure, while two position pins allow the easy mounting of the two parts of the joint.

### PAINT FINISH

ETA standard epoxy polyester powder coating.

- structure: RAL 7035 smooth finish

- door and rear panel: RAL 7035 textured finish

- top and bottom: RAL 7025 textured finish.

### ASSEMBLED CABINET (PR)

- structure manufactured from 15/10 sheet steel

- door manufactured from 20/10 sheet steel with stiffening frame, complete with Ø 3mm double bar locking system

- rear panel manufactured from 15/10 sheet steel

- removable roof manufactured from 15/10 sheet steel

- bottom with adjustable cable entry manufactured from 15/10 sheet steel.

### FLAT-PACK CABINET

#### (ASSEMBLY WITH 8 SCREWS ONLY)

- composition to be assembled complying with customers requests  
- panels and doors are supplied together with two vertical uprights complete with accessories.

### CONFORMITY AND APPROVAL



RINA



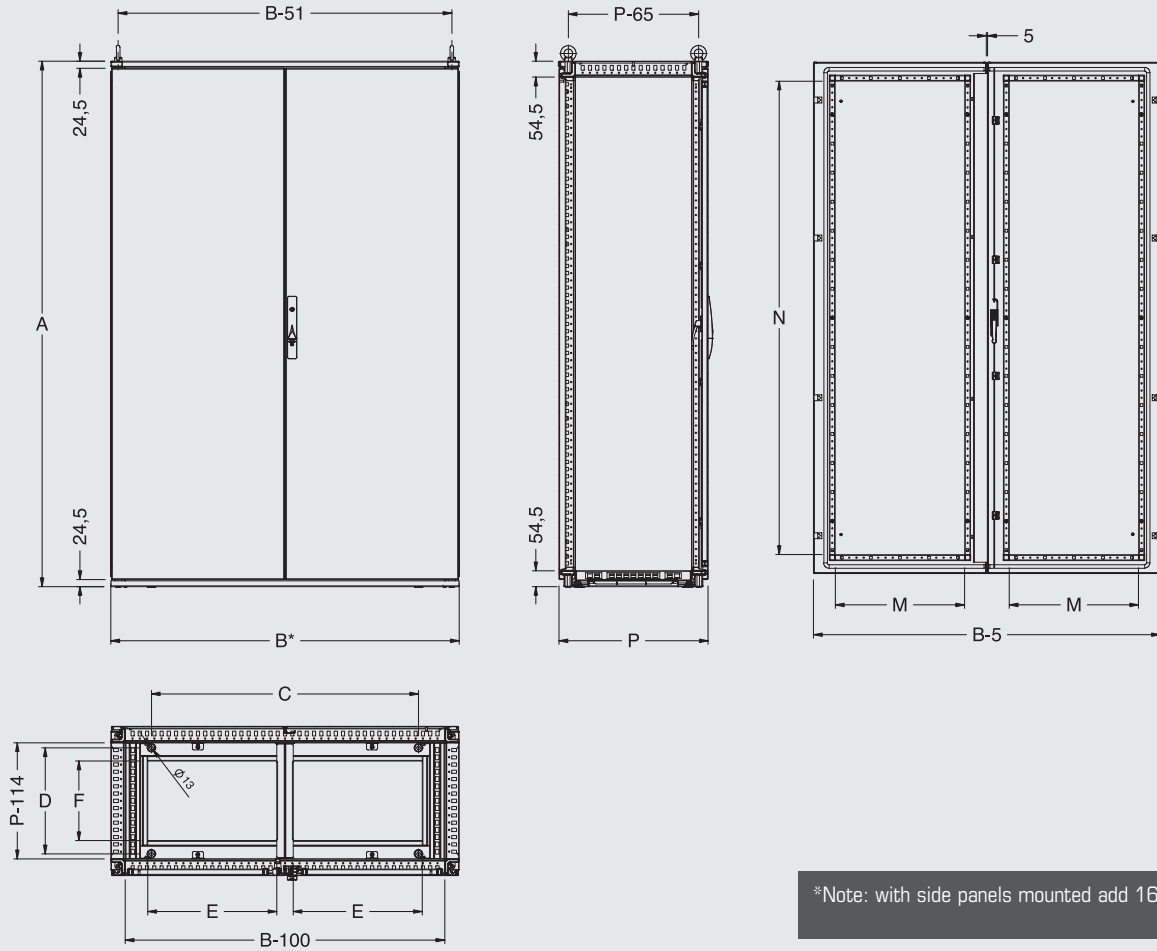
### PROTECTION RATINGS

- IP 55 complying with IEC EN62208; EN60529

- NEMA 12 complying with UL508A; UL50

- protection degree guaranteed by the two-component polyurethane foam seal (for technical details, refer to page 260)

- impact resistance IK10 complying with IEC EN62208; EN50102.



\*Note: with side panels mounted add 16mm

DIMENSIONAL SPECIFICATIONS

WIDTH	DIMENSIONS		CABINET DIMENSIONS			FLOOR FIXING		CABLE ENTRY		DOOR SPACE	
	HEIGHT	DEPTH	B	A	P	C	D	E	F	M	N
1200	1400	400	1200	1409	414	920	265	445	174	445	1230
1200	1400	500	1200	1409	514	920	365	445	274	445	1230
1200	1600	400	1200	1609	414	920	265	445	174	445	1430
1200	1600	500	1200	1609	514	920	365	445	274	445	1430
1200	1600	600	1200	1609	614	920	465	445	374	445	1430
1200	1800	400	1200	1809	414	920	265	445	174	445	1630
1200	1800	500	1200	1809	514	920	365	445	274	445	1630
1200	1800	600	1200	1809	614	920	465	445	374	445	1630
1200	1800	800	1200	1809	814	920	665	445	574	445	1630
1200	2000	400	1200	2009	414	920	265	445	174	445	1830
1200	2000	500	1200	2009	514	920	365	445	274	445	1830
1200	2000	600	1200	2009	614	920	465	445	374	445	1830
1200	2000	800	1200	2009	814	920	665	445	574	445	1830
1200	2000	1000	1200	2009	1014	920	865	445	774	445	1830
1200	2200	500	1200	2209	514	920	365	445	274	445	2030
1200	2200	600	1200	2209	614	920	465	445	374	445	2030
1200	2200	800	1200	2209	814	920	665	445	574	445	2030
1400	2000	400	1400	2009	414	1120	265	545	174	545	1830
1400	2000	500	1400	2009	514	1120	365	545	274	545	1830
1400	2000	600	1400	2009	614	1120	465	545	374	545	1830
1400	2000	800	1400	2009	814	1120	665	545	574	545	1830
1400	2000	1000	1400	2009	1014	1120	865	545	774	545	1830
1600	1400	400	1600	1409	414	1320	265	645	174	645	1230
1600	1400	500	1600	1409	514	1320	365	645	274	645	1230
1600	2000	400	1600	2009	414	1320	265	645	174	645	1830
1600	2000	500	1600	2009	514	1320	365	645	274	645	1830
1600	2000	600	1600	2009	614	1320	465	645	374	645	1830
1600	2000	800	1600	2009	814	1320	665	645	574	645	1830

# ARETA 1200 WIDE

## CODES FOR ASSEMBLED CABINET

CABINET DIMENSIONS			CABINET WITH FRONTAL BLANK DOORS 600+600 + REAR PANEL	CABINET WITH FRONTAL BLANK DOORS 600+600 + REAR BLANK DOORS 600+600
WIDTH	HEIGHT	DEPTH		
1200	1400	400	ARETA121404PR	ARETA121404DP
1200	1400	500	ARETA121405PR	ARETA121405DP
1200	1600	400	ARETA121604PR	ARETA121604DP
1200	1600	500	ARETA121605PR	ARETA121605DP
1200	1600	600	ARETA121606PR	ARETA121606DP
1200	1800	400	ARETA121804PR	ARETA121804DP
1200	1800	500	ARETA121805PR	ARETA121805DP
1200	1800	600	ARETA121806PR	ARETA121806DP
1200	1800	800	ARETA121808PR	ARETA121808DP
1200	2000	400	ARETA122004PR	ARETA122004DP
1200	2000	500	ARETA122005PR	ARETA122005DP
1200	2000	600	ARETA122006PR	ARETA122006DP
1200	2000	800	ARETA122008PR	ARETA122008DP
1200	2000	1000	ARETA122010PR	-
1200	2200	500	ARETA122205PR	ARETA122205DP
1200	2200	600	ARETA122206PR	ARETA122206DP
1200	2200	800	ARETA122208PR	ARETA122208DP

## CODES FOR FLAT-PACK CABINET

CABINET DIMENSIONS			ROOF + BOTTOM	DOUBLE BLANK DOOR 600+600 + FRONT UPRIGHTS	REAR PANEL + REAR UPRIGHTS
WIDTH	HEIGHT	DEPTH			
1200	1400	400	ATTF120040	ATPO120140	ATRE120140
1200	1400	500	ATTF120050	ATPO120140	ATRE120140
1200	1600	400	ATTF120040	ATPO120160	ATRE120160
1200	1600	500	ATTF120050	ATPO120160	ATRE120160
1200	1600	600	ATTF120060	ATPO120160	ATRE120160
1200	1800	400	ATTF120040	ATPO120180	ATRE120180
1200	1800	500	ATTF120050	ATPO120180	ATRE120180
1200	1800	600	ATTF120060	ATPO120180	ATRE120180
1200	1800	800	ATTF120080	ATPO120180	ATRE120180
1200	2000	400	ATTF120040	ATPO120200	ATRE120200
1200	2000	500	ATTF120050	ATPO120200	ATRE120200
1200	2000	600	ATTF120060	ATPO120200	ATRE120200
1200	2000	800	ATTF120080	ATPO120200	ATRE120200
1200	2200	500	ATTF120050	ATPO120220	ATRE120220
1200	2200	600	ATTF120060	ATPO120220	ATRE120220
1200	2200	800	ATTF120080	ATPO120220	ATRE120220

## ARETA 1400 WIDE

## CODES FOR ASSEMBLED CABINET

CABINET DIMENSIONS			CABINET WITH FRONTAL BLANK DOOR + REAR PANEL	CABINET WITH FRONTAL BLANK DOORS 700+700 + REAR BLANK DOORS 700+700
WIDTH	HEIGHT	DEPTH		
1400	2000	400	ARETA142004PR	ARETA142004DP
1400	2000	500	ARETA142005PR	ARETA142005DP
1400	2000	600	ARETA142006PR	ARETA142006DP
1400	2000	800	ARETA142008PR	ARETA142008DP

## CODES FOR FLAT-PACK CABINET

CABINET DIMENSIONS			ROOF + BOTTOM	DOUBLE BLANK DOOR 700+700 + FRONT UPRIGHTS	REAR PANEL + REAR UPRIGHTS
WIDTH	HEIGHT	DEPTH			
1400	2000	400	ATTF140040	ATPO140200	ATRE140200
1400	2000	500	ATTF140050	ATPO140200	ATRE140200
1400	2000	600	ATTF140060	ATPO140200	ATRE140200
1400	2000	800	ATTF140080	ATPO140200	ATRE140200

## ARETA 1600 WIDE

## CODES FOR ASSEMBLED CABINET

CABINET DIMENSIONS			CABINET WITH FRONTAL BLANK DOOR + REAR PANEL	CABINET WITH FRONTAL BLANK DOORS 800+800 + REAR BLANK DOORS 800+800
WIDTH	HEIGHT	DEPTH		
1600	1400	400	ARETA161404PR	ARETA161404DP
1600	1400	500	ARETA161405PR	ARETA161405DP
1600	2000	400	ARETA162004PR	ARETA162004DP
1600	2000	500	ARETA162005PR	ARETA162005DP
1600	2000	600	ARETA162006PR	ARETA162006DP
1600	2000	800	ARETA162008PR	ARETA162008DP

## CODES FOR FLAT-PACK CABINET

CABINET DIMENSIONS			ROOF + BOTTOM	DOUBLE BLANK DOOR 800+800 + FRONT UPRIGHTS	REAR PANEL + REAR UPRIGHTS
WIDTH	HEIGHT	DEPTH			
1600	1400	400	ATTF160040	ATPO160140	ATRE160140
1600	1400	500	ATTF160050	ATPO160140	ATRE160140
1600	2000	400	ATTF160040	ATPO160200	ATRE160200
1600	2000	500	ATTF160050	ATPO160200	ATRE160200
1600	2000	600	ATTF160060	ATPO160200	ATRE160200
1600	2000	800	ATTF160080	ATPO160200	ATRE160200

# ARETA CABLE ENTRY MODULE



## MAIN ACCESSORIES



ATFI side panels (page 44)



ATZE modular plinth (page 45)



eyebolts (page 46)



lifting brackets (page 46)

To be used as an end or an intermediate element in a suite of cabinets. Front and/or rear access.

### CHARACTERISTICS

#### - STRUCTURE

Profile and rails are made up of a unique closed profile manufactured from 15/10 sheet steel stapled and welded, with rounded edges.

The frame corners are manufactured with orthogonal joints laser welded to vertical upright rails and horizontal rails for roof and bottom.

Only 8 high resistance screws are necessary to mount the structure, while two position pins allow the easy mounting of the two parts of the joint.

#### PAINT FINISH

ETA standard epoxy polyester powder coating.

- structure: RAL 7035 smooth finish
- door and rear panel: RAL 7035 textured finish
- roof, bottom and plinth: RAL 7025 textured finish.

#### ASSEMBLED VERSION

- structure
- door manufactured from 20/10 sheet steel with stiffening frame, complete with  $\varnothing$  3mm double bar locking system
- rear panel manufactured from 15/10 sheet steel
- removable roof manufactured from 15/10 sheet steel
- bottom manufactured from 15/10 sheet steel.

#### FLAT-PACK VERSION

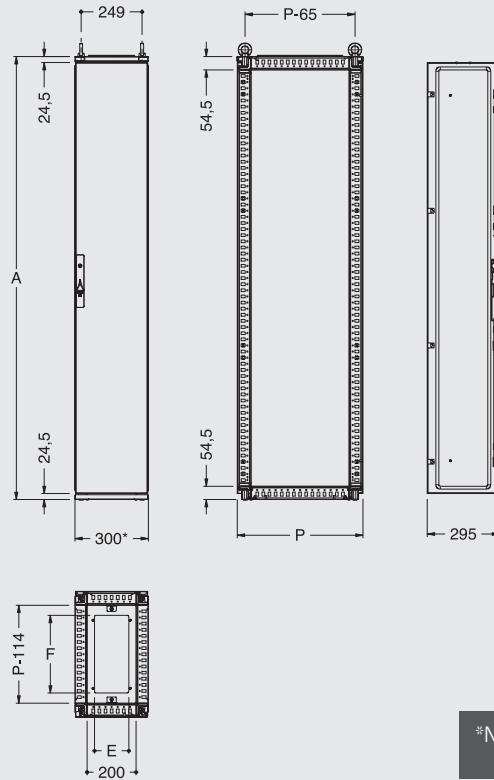
- composition to be assembled complying with customers requests
- panels and doors are supplied together with two vertical uprights complete with accessories.

#### PROTECTION RATINGS

- IP 55
- protection degree guaranteed by the two-component polyurethane foam seal (for technical details, refer to page 260)

For further cable entry modules, please check on page 53.





\*Note: with side panels mounted add 16mm

**DIMENSIONAL SPECIFICATIONS**

WIDTH	DIMENSIONS		CABLE ENTRY MODULE			CABLE ENTRY	
	HEIGHT	DEPTH	B*	A	P	E	F
300	1600	400	300	1609	414	140	217
300	1600	500	300	1609	514	140	317
300	1600	600	300	1609	614	140	417
300	1800	400	300	1809	414	140	217
300	1800	500	300	1809	514	140	317
300	1800	600	300	1809	614	140	417
300	1800	800	300	1809	814	140	617
300	2000	400	300	2009	414	140	217
300	2000	500	300	2009	514	140	317
300	2000	600	300	2009	614	140	417
300	2000	800	300	2009	814	140	617
300	2200	500	300	2209	514	140	317
300	2200	600	300	2209	614	140	417
300	2200	800	300	2209	814	140	617

**ASSEMBLED CABLE ENTRY MODULE**

ARETA CODE	DIMENSIONS OF CABLE ENTRY MODULE		
	W	H	D
ARETA031604	300	1600	400
ARETA031605	300	1600	500
ARETA031606	300	1600	600
ARETA031804	300	1800	400
ARETA031805	300	1800	500
ARETA031806	300	1800	600
ARETA031808	300	1800	800
ARETA032004	300	2000	400
ARETA032005	300	2000	500
ARETA032006	300	2000	600
ARETA032008	300	2000	800
ARETA032205	300	2200	500
ARETA032206	300	2200	600
ARETA032208	300	2200	800

**FLAT-PACK CABLE ENTRY MODULE**

DIM. OF THE MODULE	W	H	D	ROOF + BOTTOM	BLANK DOOR	REAR PANEL
						REAR PANEL
300	1600	400	400	ATTF030040	ATP0030160	ATRE030160
300	1600	500	500	ATTF030050	ATP0030160	ATRE030160
300	1600	600	600	ATTF030060	ATP0030160	ATRE030160
300	1800	400	400	ATTF030040	ATP0030180	ATRE030180
300	1800	500	500	ATTF030050	ATP0030180	ATRE030180
300	1800	600	600	ATTF030060	ATP0030180	ATRE030180
300	1800	800	800	ATTF030080	ATP0030180	ATRE030180
300	2000	400	400	ATTF030040	ATP0030200	ATRE030200
300	2000	500	500	ATTF030050	ATP0030200	ATRE030200
300	2000	600	600	ATTF030060	ATP0030200	ATRE030200
300	2000	800	800	ATTF030080	ATP0030200	ATRE030200
300	2200	500	500	ATTF030050	ATP0030220	ATRE030220
300	2200	600	600	ATTF030060	ATP0030220	ATRE030220
300	2200	800	800	ATTF030080	ATP0030220	ATRE030220