

ZBX STAINLESS STEEL MONOBLOC CONTROL DESKS



CHARACTERISTICS

Structure manufactured from 15/10 AISI 304L press bent stainless steel material.

Mounting plate manufactured from 25/10 sendzimir sheet steel mounted on the rear cover.

Upper cover manufactured from 15/10 AISI 304L material with sendzimir profiles and mechanical stop.

Adjustable cable entry. Item in AISI 316L available on request.

DELIVERY

- control desk
- doors complete with \varnothing 3mm double bar key locking system
- mounting plate
- upper cover complete with locking system
- adjustable cable entry.

CONFORMITY AND APPROVAL



PROTECTION RATINGS

- IP 55.
- NEMA 12 complying with UL508A; UL50.

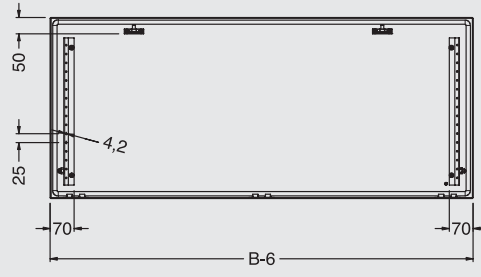
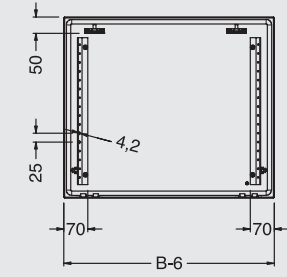
STAINLESS STEEL MONOBLOC CONTROL DESKS

ZBX CODE	DIMENSIONS			FLOOR FIXING		CABLE ENTRY		DOOR SPACE		INNER PLATE	
	B	A	P	C	D	E	F	M	L	H	
ZBX6-01	600	1000	400	489	303	490	260	445	520	918	
ZBX8-01	800	1000	400	689	303	690	260	645	720	918	
ZBX0-01	1000	1000	400	889	303	410 (x2)	260	345	920	918	
ZBX2-01	1200	1000	400	1089	303	510 (x2)	260	445	1120	918	

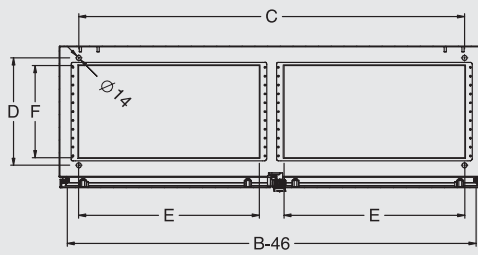
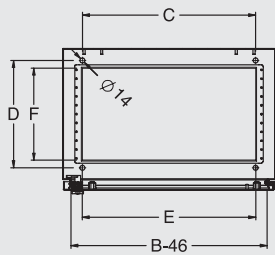
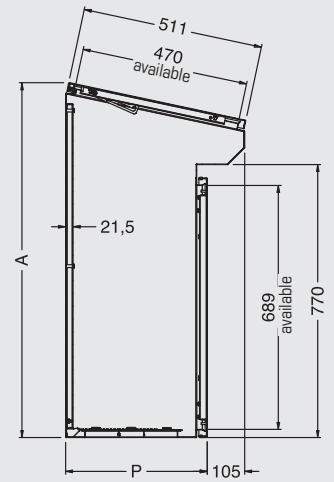
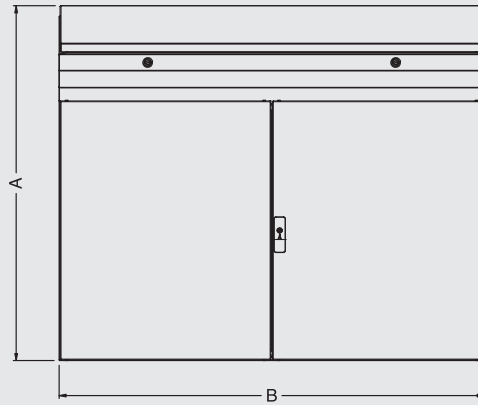
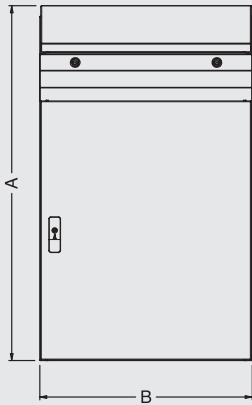
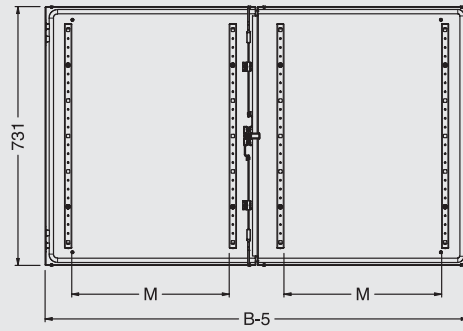
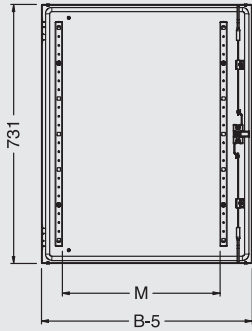
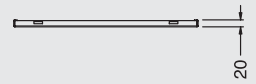
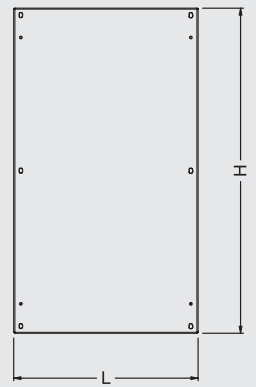
To order a stainless steel enclosure in high grade AISI 316L, add the suffix "H" to the product code.
I.E.: ZBX6-01H.

W=600/800

W=1000/1200



inner plate



MODULAR PLINTH ATZX**CHARACTERISTICS**

Corner pieces manufactured from 20/10 AISI 304L stainless steel (AISI 316L on request), with front covers made from stainless steel. Front/side crosspieces manufactured from 15/10 AISI 304L stainless steel (AISI 316L on request).

DELIVERY

The modular plinth is made up of:

- corner pieces: supply includes 4 pieces complete with front covers and mounting hardware
- front crosspieces: supply includes 2 pieces
- side crosspieces: supply includes 2 pieces

**UNIVERSAL CORNER PIECES**

ATZX CODE	DESCRIPTION
ATZX-A100	CORNER PIECES FOR PLINTH H=100
ATZX-A200	CORNER PIECES FOR PLINTH H=200

Supply includes 4 pieces complete with mounting accessories.
To order the corner pieces in high grade AISI 316L, please add the suffix "H" to the code. I.E.: ATZX-A100H.

SIDE CROSSPIECES FOR ZBX CONTROL DESK

ATZX CODE	DESCRIPTION	CROSS. LENGTH (mm)
ATZX-T0400A	SIDE CROSS. FOR PLINTH D=400	236

Supply includes 2 pieces.

To order the side crosspieces H=200, add the suffix "D" to the code. I.E.: ATZX-T0400AD.

To order the side crosspieces in high grade AISI 316L, add the suffix "H" to the code. I.E.: ATZX-T0400AH.

For more information, assembly drawings and dimensional features, please check on page 217.

UNIVERSAL FRONT CROSSPIECES

ATZX CODE	DESCRIPTION	CROSS. LENGTH (mm)
ATZX-T0600	FRONT CROSS. FOR PLINTH W=600	444
ATZX-T0800	FRONT CROSS. FOR PLINTH W=800	644
ATZX-T1000	FRONT CROSS. FOR PLINTH W=1000	844
ATZX-T1200	FRONT CROSS. FOR PLINTH W=1200	1044

Supply includes 2 pieces.

To order the front crosspieces H=200, add the suffix "D" to the code. I.E.: ATZX-T0600D.

To order front crosspieces in high grade AISI 316L, add the suffix "H" to the code. I.E.: ATZX-T0600H.

STAINLESS STEEL MODULAR CONTROL DESKS D=400



BOX AEX

CHARACTERISTICS

Structure manufactured from 15/10 AISI 304L press bent material.
Mounting plate manufactured from 25/10 sendzimir sheet steel.
Door manufactured from 15/10 AISI 304L material
with lateral stiffening cover. Item in AISI 316L available on request.

DELIVERY

- box
- door complete with \varnothing 3mm double bar closing system
- mounting plate
- adjustable cable entry.

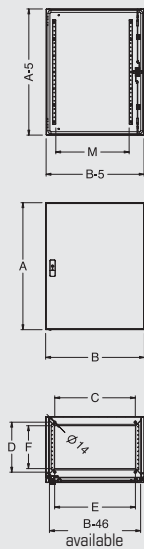
CONFORMITY AND APPROVAL



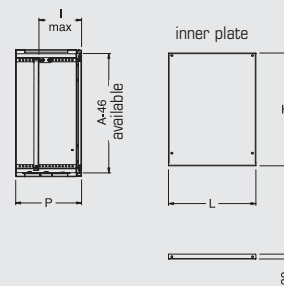
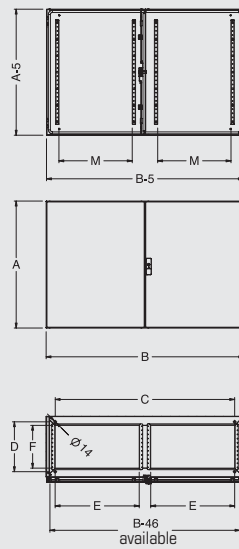
PROTECTION RATINGS

- IP 55
- NEMA 12 complying with UL508A; UL50.

W=600/800



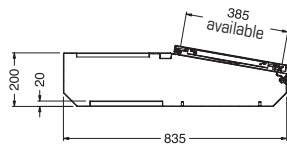
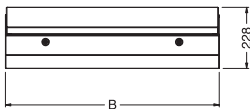
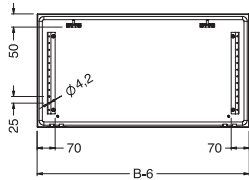
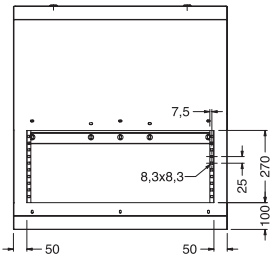
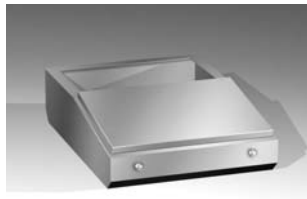
W=1200/1600



BOX AEX

AEX CODE	DIMENSIONS			FLOOR FIXING		CABLE ENTRY		DOOR SPACE		INNER PLATE	
	B	A	P	C	D	E	F	M	L	H	I (MAX)
AEX6-01	600	770	400	489	303	490	260	445	530	684	358
AEX8-02	800	770	400	689	303	690	260	645	730	684	358
AEX1-23	1200	770	400	1089	303	510 (x2)	260	445	1130	684	358
AEX1-64	1600	770	400	1489	303	710 (x2)	260	645	1530	684	358

To order a stainless steel enclosure in high grade AISI 316L,
add the suffix "H" to the code.
I.E.: AEX6-01H.



SHELF LEX

CHARACTERISTICS

Structure manufactured from 15/10 AISI 304L press bent material. Upper panel manufactured from 20/10 AISI 304L material with sendzimir rails and gas springs to support lid and avoid accidental closing. Item in AISI 316L available on request.

DELIVERY

- shelf
- lid complete with Ø 3mm double bar closing system
- rails to mount supplementary mounting plate
- sealing gasket
- mounting accessories.

CONFORMITY AND APPROVAL

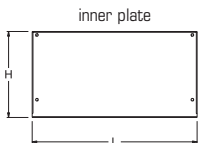
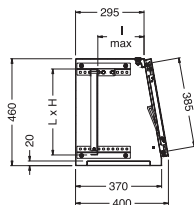
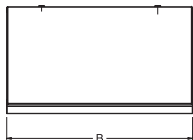
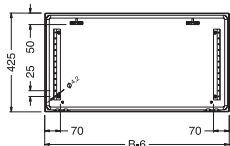
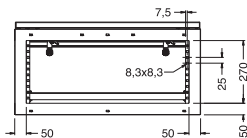


PROTECTION RATINGS

- IP 55.

SHELF LEX		
LEX CODE	B	NR. OF LOCKS
LEX6-01	600	2
LEX8-02	800	2
LEX1-23	1200	2
LEX1-64	1600	3

To order a stainless steel enclosure in high grade AISI 316L, add the suffix "H" to the code. I.E.: LEX6-01H.



UPPER PART PEX

CHARACTERISTICS

Structure manufactured from 15/10 AISI 304L press bent material. Mounting plate manufactured from 25/10 zincpassivated rails for mounting plate adjustment. Hinged front panel manufactured from 20/10 AISI 304L material complete with sendzimir vertical rails and mechanical stop. Item in AISI 316L available on request.

DELIVERY

- upper part
- hinged front cover with Ø 3mm double bar locking system
- mounting plate
- sealing gasket
- mounting accessories.

CONFORMITY AND APPROVAL

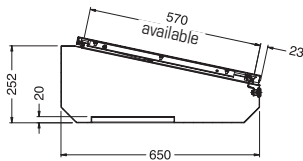
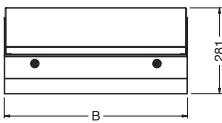
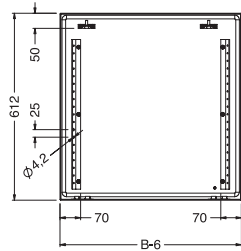
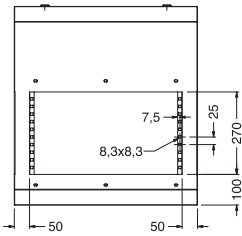


PROTECTION RATINGS

- IP 55.

UPPER PART PEX				
PEX CODE	B	PLATE DIM.		
		L	H	I (MAX)
PEX6-01	600	510	370	250
PEX8-02	800	710	370	250
PEX1-23	1200	1110	370	250
PEX1-64	1600	1510	370	250

To order a stainless steel enclosure in high grade AISI 316L, add the suffix "H" to the code. I.E.: PEX6-01H.



SHELF MEX

CHARACTERISTICS

Structure manufactured from 15/10 AISI 304L press bent material. Upper panel manufactured from 20/10 AISI 304L material with sendzimir rails and gas springs to support lid and avoid accidental closing. Item in AISI 316L available on request.

DELIVERY

- shelf
- lid complete with Ø 3mm double bar closing system
- sealing gasket
- mounting accessories.

CONFORMITY AND APPROVAL



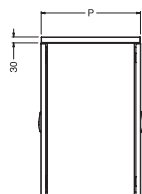
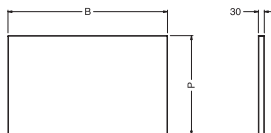
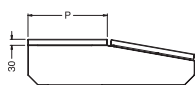
PROTECTION RATINGS

- IP 55
- NEMA 12 complying with UL508A; UL50.

SHELF MEX		
MEX CODE	B	NR. OF LOCKS
MEX6-01	600	2
MEX8-02	800	2
MEX1-23	1200	2
MEX1-64	1600	3

To order a stainless steel enclosure in high grade AISI 316L, add the suffix "H" to the code. I.E.: MEX6-01H.

ST. STEEL MODULAR CONTROL DESKS COMPLEMENTARY ACCESSORIES



COVER TLX

Manufactured from 15/10 AISI 304L material (AISI 316L on request).

To be used as top cover of the LEX shelf.

DELIVERY

Supply includes single piece with mounting accessories.

COVER TLX

TLX CODE	B	P
TLX6-01	600	398
TLX8-02	800	398
TLX1-23	1200	398
TLX1-64	1600	398

To order a stainless steel enclosure in high grade AISI 316L, please add H to the product code. E.g.: TLX6-01H.



UNIVERSAL CORNER PIECES

ATZX CODE	DESCRIPTION
ATZX-A100	CORNER PIECES FOR PLINTH H=100
ATZX-A200	CORNER PIECES FOR PLINTH H=200

Supply includes 4 pieces complete with mounting accessories.
To order the corner pieces in high grade AISI 316L, add the suffix "H" to the code. I.E.: ATZX-A100H.

SIDE CROSS. FOR MODULAR CONTROL DESK

ATZX CODE	DESCRIPTION	CROSS. LENGTH (mm)
ATZX-T0400A	SIDE CROSS. FOR PLINTH D=400	236

Supply includes 2 pieces.

To order the side crosspieces H=200, add the suffix "D" to the code. I.E.: ATZX-T0400AD.

To order the side crosspieces in high grade AISI 316L, add the suffix "H" to the code. I.E.: ATZX-T0400AH.

MODULAR PLINTH ATZX

CHARACTERISTICS

Corner pieces manufactured from 20/10 AISI 304L stainless steel (AISI 316L on request), with front covers made from stainless steel. Front/side crosspieces manufactured from 15/10 AISI 304L stainless steel (AISI 316L on request).

DELIVERY

The modular plinth is made up of:

- corner pieces: supply includes 4 pieces complete with front covers and mounting hardware
- front crosspieces: supply includes 2 pieces
- side crosspieces: supply includes 2 pieces

UNIVERSAL FRONT CROSSPIECES

ATZX CODE	DESCRIPTION	CROSS. LENGTH (mm)
ATZX-T0600	FRONT CROSS. FOR PLINTH W=600	444
ATZX-T0800	FRONT CROSS. FOR PLINTH W=800	644
ATZX-T1200	FRONT CROSS. FOR PLINTH W=1200	1044
ATZX-T1600	FRONT CROSS. FOR PLINTH W=1600	1244

Supply includes 2 pieces.

To order the front crosspieces H=200, add the suffix "D" to the code. I.E.: ATZX-T0600D.

To order the front crosspieces in high grade AISI 316L, add the suffix "H" to the code. I.E.: ATZX-T0600H.

For more information, assembly drawings and dimensional features, please check on page 217.